

STAT1 (Phospho-Tyr701) Polyclonal Antibody

ORDERING INFORMATION

Catalog No.: 43044

Format: 100ul at 1.0mg/ml in PBS (without Mg²⁺ and Ca²⁺), pH 7.4, 150mM NaCl, 0.02% sodium azide and 50% glycerol. Affinity-purified on phosphopeptide; non-phosphopeptide-reactive antibodies were removed by chromatography on non-phosphorylated peptide.

BACKGROUND

Signal transducers and activators of transcription (STATs) are transcription factors that play important roles in signaling pathways induced by many different cytokines and growth factors that regulate cell growth and differentiation, the immune response, antiviral activity, and homeostasis. Their activation and mechanisms of action are examples of direct signaling to the nucleus by extracellular polypeptide ligands without the involvement of second messengers, tyrosine phosphorylation of transcription factors, or transcription factors that make direct contact with membrane-bound receptors and DNA. Since the discovery of STAT 1 and 2, the family has been expanded to seven members. Two alternatively spliced isoforms of STAT1 (p84 and p91) have been described.

SPECIFICATION SUMMARY

Antigen: Peptide sequence that includes phosphorylation site of tyrosine 701 (T-G-Y(p)-I-K) derived from human STAT1 and conjugated to KLH.

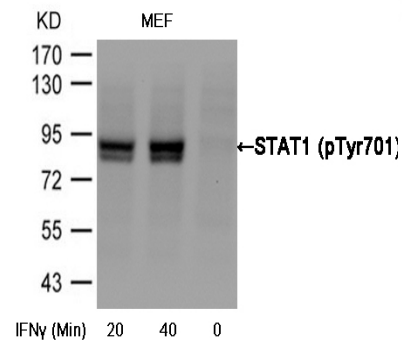
Accession no.: P42224, NP_009330.1

Host Species: Rabbit

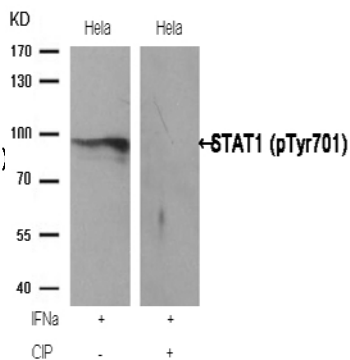
Specificity: This antibody detects endogenous human and mouse STAT1 only when phosphorylated at tyrosine 701.

APPLICATION

Immunoblotting: use at dilution of 1:500-1:1,000. A band of ~91kDa is detected.

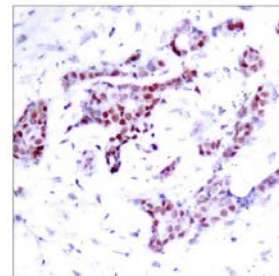


Detection of STAT1 (phospho-Tyr701) in extracts of MEF cells treated or untreated with IFN γ .



Detection of STAT1 (phospho-Tyr701) in extracts of HeLa cells treated with IFN α or calf intestinal phosphatase.

Immunohistochemistry: use at dilution of 1:50-1:100.



Detection of STAT1 (phospho-Tyr701) in paraffin-embedded human breast carcinoma tissue.

These are recommended working dilutions. Enduser should determine optimal dilutions for their applications.

STAT1 (Phospho-Tyr701) Polyclonal Antibody

DILUTION INSTRUCTIONS

Dilute in PBS or medium that is identical to that used in the assay system.

STORAGE AND STABILITY

This antibody is stable for at least one (1) year at -20°C. Can be stored at 4°C for short-term use.

For in vitro investigational use only. Not intended for therapeutic or diagnostic applications.