

GATA1 (Phospho-Ser142) Polyclonal Antibody

ORDERING INFORMATION

Catalog No.: 43041

Format: 100ul at 1.0mg/ml in PBS (without Mg²⁺ and Ca²⁺), pH 7.4, 150mM NaCl, 0.02% sodium azide and 50% glycerol. Affinity-purified on phosphopeptide; non-phosphopeptide-reactive antibodies were removed by chromatography on non-phosphorylated peptide.

BACKGROUND

GATA1 encodes a protein, GATA1, which belongs to the GATA family of transcription factors. This protein plays an important role in erythroid development by regulating the switch of fetal hemoglobin to adult hemoglobin. Mutations in this gene have been associated with X-linked dyserythropoietic anemia and thrombocytopenia.

SPECIFICATION SUMMARY

Antigen: Peptide sequence that includes phosphorylation site of serine 142 (R-L-S(p)-P-D) derived from human GATA1 and conjugated to KLH.

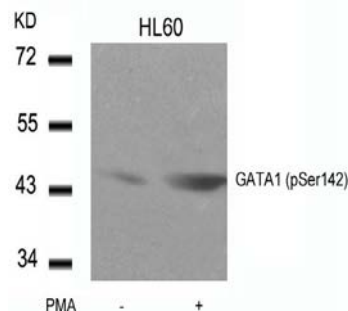
Accession no.: P15976, NP_002040.1

Host Species: Rabbit

Specificity: This antibody detects endogenous human, mouse, and rat GATA1 only when phosphorylated at serine 142.

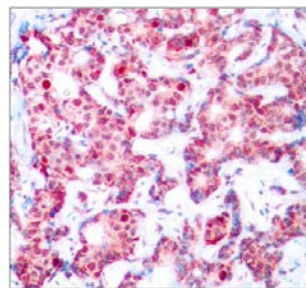
APPLICATION

Immunoblotting: use at dilution of 1:500-1:1,000. A band of ~43kDa is detected.



Detection of GATA1 (phospho-Ser142) in extracts of HL60 cells untreated or treated with PMA.

Immunohistochemistry: use at dilution of 1:50-1:100.



Detection of GATA1 (phospho-Ser142) in paraffin-embedded human breast carcinoma tissue.

These are recommended working dilutions. Enduser should determine optimal dilutions for their applications

DILUTION INSTRUCTIONS

Dilute in PBS or medium that is identical to that used in the assay system.

STORAGE AND STABILITY

This antibody is stable for at least one (1) year at -20°C. Can be stored at 4°C for short-term use.

For in vitro investigational use only. Not intended for therapeutic or diagnostic applications.