

JunB (Phospho-Ser259) Polyclonal Antibody

ORDERING INFORMATION

Catalog No.: 43027

Format: 100ul at 1.0mg/ml in PBS (without Mg²⁺ and Ca²⁺), pH 7.4, 150mM NaCl, 0.02% sodium azide and 50% glycerol. Affinity-purified on phosphopeptide; non-phosphopeptide-reactive antibodies were removed by chromatography on non-phosphorylated peptide.

BACKGROUND

Transcription factor JunB is a protein that in humans is encoded by the *JUNB* gene and is involved in regulating gene activity following the primary growth factor response. It binds to the DNA sequence 5'-TGA[CG]TCA-3'.

SPECIFICATION SUMMARY

Antigen: Peptide sequence that includes phosphorylation site of serine 259 (P-B-S(p)-P-I) derived from human JunB and conjugated to KLH.

Accession no.: P17275, NP_002220.1

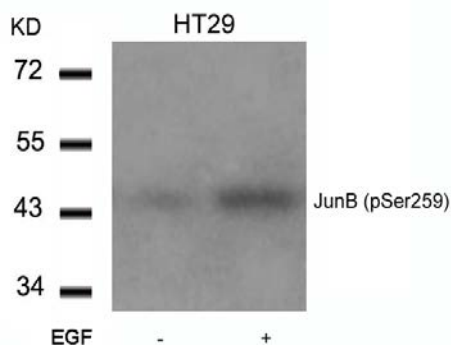
Host Species: Rabbit

Specificity: This antibody detects endogenous human, mouse, and rat JunB only when phosphorylated at serine 259.

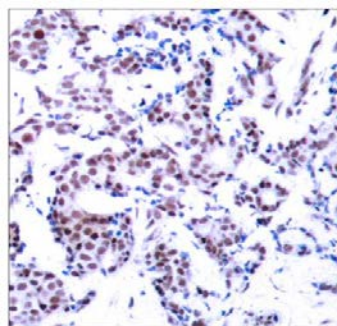
APPLICATION

Immunoblotting: use at dilution of 1:500-1:1,000. A band of ~43kDa is detected.

Immunohistochemistry: use at dilution of 1:50-1:100.



Detection of JunB (phospho-Ser259) in extracts of HT29 cells untreated or treated with EGF.



Detection of JunB (phospho-Ser259) in paraffin-embedded human breast carcinoma tissue.

These are recommended working dilutions. Enduser should determine optimal dilutions for their applications.

DILUTION INSTRUCTIONS

Dilute in PBS or medium that is identical to that used in the assay system.

STORAGE AND STABILITY

This antibody is stable for at least one (1) year at -20°C. Can be stored at 4°C for short-term use.

For in vitro investigational use only. Not intended for therapeutic or diagnostic applications.