

## Elk-1 (Phospho-Ser383) Polyclonal Antibody

### ORDERING INFORMATION

**Catalog No.:** 43004

**Format:** 100ul at 1.0mg/ml in PBS (without Mg<sup>2+</sup> and Ca<sup>2+</sup>), pH 7.4, 150mM NaCl, 0.02% sodium azide and 50% glycerol. Affinity-purified on phosphopeptide; non-phosphopeptide-reactive antibodies were removed by chromatography on non-phosphorylated peptide.

### BACKGROUND

Elk-1 is a member of the Ets family of transcription factors and the ternary complex factor (TCF) subfamily. Proteins of that subfamily form a ternary complex by binding to the serum response factor and the serum response element in the promoter of the c-fos proto oncogene. Elk-1 protein is a nuclear target for the ras-raf-MAPK signaling cascade.

### SPECIFICATION SUMMARY

**Antigen:** Peptide sequence that includes phosphorylation site of serine 383 (T-L-S(p)-P-I) derived from human Elk-1 and conjugated to KLH.

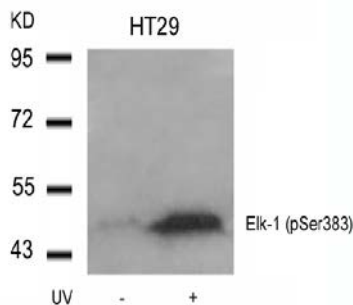
**Accession no.:** P19419, NP\_001107595.1

**Host Species:** Rabbit

**Specificity:** This antibody detects endogenous human, mouse, and rat Elk-1 only when phosphorylated at serine 383.

### APPLICATIONS

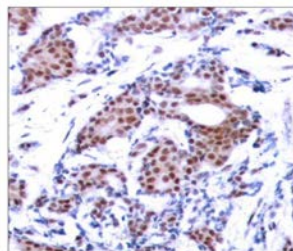
**Western blotting:** use at dilution of 1:500-1:1,000. A band of ~47kDa is detected.



Detection of Elk-1 (Phospho-Ser383) in HT29 cell extracts untreated or treated with UV.

These are recommended working dilutions. Enduser should determine optimal dilutions for their applications.

**Immunohistochemistry:** use at dilution of 1:50-1:100.



Detection of Elk-1 (phospho-Ser383) in paraffin-embedded human breast carcinoma tissue.

### DILUTION INSTRUCTIONS

Dilute in PBS or medium that is identical to that used in the assay system.

### STORAGE AND STABILITY

This antibody is stable for at least one (1) year at -20°C. Can be stored at 4°C for short-term.

*For in vitro investigational use only. Not intended for therapeutic or diagnostic applications.*