

recomBlot Borrelia IgG (canis)

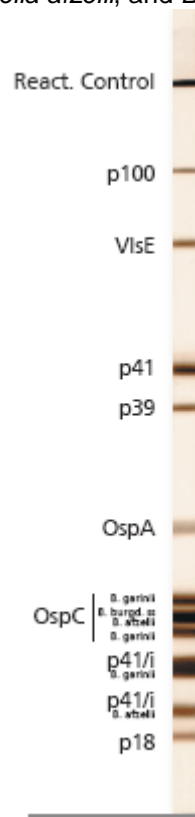
Immunoblot format with recombinant *Borrelia* antigens and reagents needed for detection of canine IgG and antibodies to *Borrelia burgdorferi* sensu stricto, *Borrelia afzelii*, and *Borrelia garinii*.

The bacterium *Borrelia burgdorferi*, a spirochete, is responsible for Lyme borreliosis, a disease transmitted by ticks. Lyme borreliosis is a multisystemic disease with diverse symptoms.

Genetically engineered antigens are used in the *recomBlot Borrelia* kits. In contrast to using lysates of *Borrelia burgdorferi* cells, the recombinant antigens can be presented in varied concentrations so that all *Borrelia burgdorferi* antigens are well-represented. This applies especially to the OspC and the VlsE antigens.

In addition, the *recomBlot Borrelia IgG* (canis) kit includes antigens of three *Borrelia* species: *Borrelia burgdorferi* sensu stricto, *Borrelia garinii*, and *Borrelia afzelii*.

Product no. 4212 *recomBlot Borrelia IgG*
(canis)
(20 tests per kit)



For more information visit
<http://www.mikrogen.de/english/deutschland/home.html>

Available in the U.S. For Research Use Only.
Not intended for diagnostic procedures.