

PSAP Monoclonal Antibody

ORDERING INFORMATION

Catalog No.	Clone No.	Size
34070	G655.1	100ul

Format: Purified antibody in Tris buffer, pH 7.3-7.7, 1% BSA, <0.1% sodium azide.

BACKGROUND

Prostatic Specific Acid Phosphatase (PSAP) is an enzyme found in the glandular epithelium of the prostate. PSAP levels are elevated in hyperplastic prostate and prostate carcinoma with the highest levels being detected in metastasized prostate cancer. Moderate overexpression of PSAP is also characteristic of diseases of the bone (such as Paget's disease or hyperparathyroidism), diseases of blood cells (such as sickle-cell disease), multiple myeloma, or lysosomal storage diseases such as Gaucher's disease.

DESCRIPTION

Antigen: Recombinant human PSAP.

Accession No.: P15309

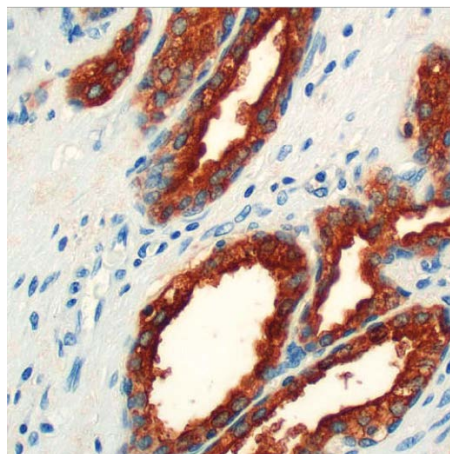
Host: Mouse

Antibody Subtype: IgG1

Specificity: Human PSAP. Reactivity with other species has not been investigated.

APPLICATIONS

Immunohistochemistry: use at a dilution of 1:100-1:200 on formalin-fixed, paraffin-embedded samples after heat-induced epitope retrieval at pH 9 for 10-30 minutes.



Detection of PSAP in human prostate with #34070 diluted 1:100-1:200.

STORAGE AND STABILITY

Store at 2-8°C. Do not freeze.

For in vitro investigational use only. Not for use in diagnostic or therapeutic applications.