

PD-L1 Monoclonal Antibody

ORDERING INFORMATION

Catalog No.	Clone No.	Size
34068	G411.1	100ul

Format: Purified antibody in Tris buffer, pH 7.3-7.7, 1% BSA, <0.1% sodium azide.

BACKGROUND

Programmed Death-Ligand 1 (PD-L1), also known as CD274 or B7 Homolog 1 (B7-H1), is a transmembrane protein involved in suppressing the immune system and rendering tumor cells resistant to CD8+ T cell-mediated lysis through binding of the Programmed Death-1 (PD-1) receptor. Overexpression of PD-L1 may allow cancer cells to evade the actions of the host immune system. In renal cell carcinoma, upregulation of PD-L1 has been linked to increased tumor aggressiveness and risk of death, and, in ovarian cancer, higher expression of this protein has led to significantly poorer prognosis. PD-L1 has also been linked to systemic lupus erythematosus and cutaneous melanoma. When considered in adjunct with CD8+ tumor-infiltrating lymphocyte density, expression levels of PD-L1 may be a useful predictor of multiple cancer types, including stage III non-small cell lung cancer, hormone receptor negative breast cancer, and sentinel lymph node melanoma.

DESCRIPTION

Antigen: Recombinant human PD-L1.

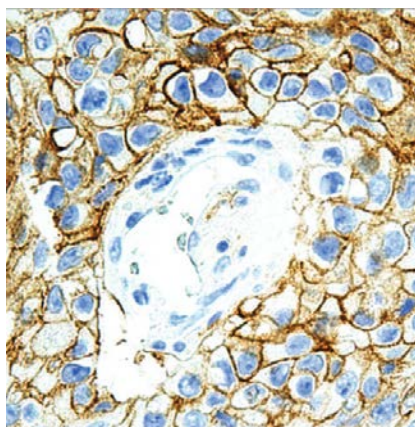
Accession No.: Q9NZQ7

Host: Rabbit

Specificity: Human PD-L1. Reactivity with other species has not been investigated.

APPLICATIONS

Immunohistochemistry: use at a dilution of 1:100-1:200 on formalin-fixed, paraffin-embedded samples after heat-induced epitope retrieval at pH 9 for 10-30 minutes.



Detection of PD-L1 in human lung tumor with #34068 diluted 1:100-1:200.

STORAGE AND STABILITY

Store at 2-8°C. Do not freeze.

For in vitro investigational use only. Not for use in diagnostic or therapeutic applications.