

CD2 Monoclonal Antibody

ORDERING INFORMATION

Catalog No.	Clone No.	Size
34053	G531.1	100ul

Format: Purified antibody in Tris buffer, pH 7.3-7.7, 1% BSA, <0.1% sodium azide.

BACKGROUND

CD2 (cluster of differentiation 2) is a cell adhesion molecule found on the surface of T cells and natural killer (NK) cells. The majority of T cell lymphomas and leukemias also express CD2 which makes it possible to distinguish those conditions from B cell neoplasms.

DESCRIPTION

Antigen: Recombinant human CD2.

Accession No.: P06729

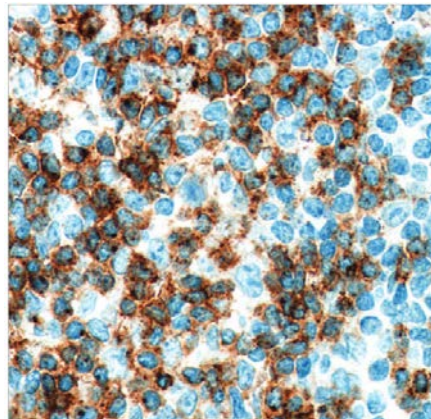
Host: Mouse

Antibody Subtype: IgG1

Specificity: Human CD2. Reactivity with other species has not been investigated.

APPLICATIONS

Immunohistochemistry: use at a dilution of 1:100-1:200 on formalin-fixed, paraffin-embedded samples after heat-induced epitope retrieval at pH 9 for 10-30 minutes.



Detection of CD2 in human tonsil with #34053 diluted 1:100-1:200.

STORAGE AND STABILITY

Store at 2-8°C. Do not freeze.

For in vitro investigational use only. Not for use in diagnostic or therapeutic applications.