

## Rattin Polyclonal Antibody

### ORDERING INFORMATION

**Catalog No.:** 28118

**Size:** 100 ug Protein G-purified antibody in PBS, pH 7.4.

### BACKGROUND

Rattin from rat is a 38 amino acid peptide having 73% sequence homology with Humanin. Significant expression is seen in the central nervous system and in cardiac and skeletal muscle. Full-length Rattin and its 1-25 fragment are as effective as Humanin in protecting rat and mouse cultured cortical neurons against a variety of toxicities that can lead to excitotoxic cell death.

### SPECIFICATION SUMMARY

**Immunogen:** Synthetic peptide corresponding to amino acids 20-35 of Rattin.

**Host Species:** Rabbit

**Antibody Class:** Polyclonal

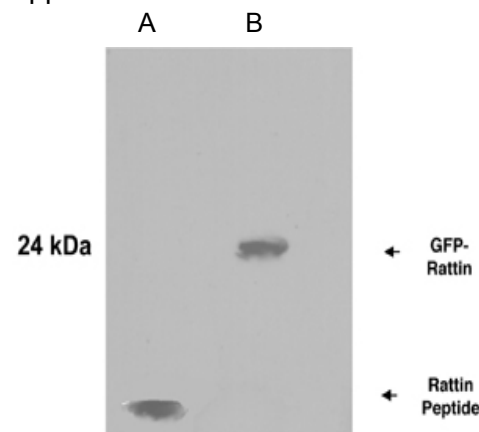
**Preservatives:** None. Available on request.

### SPECIFICITY

This antibody recognizes Rattin (rat).

### APPLICATIONS

**Immunoblotting :** use at 1-5ug/ml. A band of approximately 5 kDa is detected. These are recommended concentrations. User should determine optimal concentrations for their applications.



A. Synthetic Rattin peptide

B. Lysate of 293 T cells expressing Rattin-GFP.

### DILUTION INSTRUCTIONS

Dilute in PBS or medium which is identical to that used in the assay system.

### STORAGE AND STABILITY

This antibody is stable for at least one (1) year at  $-20^{\circ}\text{C}$ . Avoid multiple freeze-thaw cycles.

*For in vitro investigational use only. Not for use in therapeutic or diagnostic procedures.*