

DPP10 Polyclonal Antibody

ORDERING INFORMATION

Catalog No.: 28114

Size: 100 ug antigen affinity-purified antibody in PBS, pH 7.4.

SPECIFICATION SUMMARY

Antigen: Synthetic peptide corresponding to aa 521-539 of human DPP10.

Host Species: Rabbit

Antibody Class: Polyclonal

Preservatives: None. Available on request.

BACKGROUND

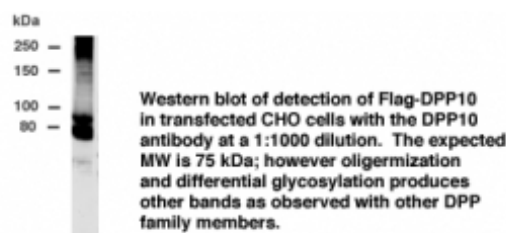
The DPP10 gene encodes a homolog of dipeptidyl peptidases that cleave terminal dipeptides from cytokines and chemokines, and it presents a potential target for asthma therapy. The DPP10 protein shares features with members of the S9B family of DPP serine proteases which includes DPP4, an enzyme that participates in chemokine processing.

SPECIFICITY

This antibody recognizes human DPP10.

APPLICATIONS

Immunoblotting: use at 1-5ug/ml. A band of approx. 75 kDa is detected, however protein oligermization may occur. These are recommended concentrations. User should determine optimal concentrations for their applications.



DILUTION INSTRUCTIONS

Dilute in PBS or medium which is identical to that used in the assay system.

STORAGE AND STABILITY

This antibody is stable for at least one (1) year at -20°C. Avoid multiple freeze-thaw cycles.

For in vitro investigational use only. Not for use in therapeutic or diagnostic procedures.