

## Chromogranin B Polyclonal Antibody

### ORDERING INFORMATION

**Catalog No.:** 26102

**Format:** 200ul rabbit antiserum

### BACKGROUND

Chromogranin B (CgB, secretogranin I) is a secretory granule matrix protein expressed in a wide variety of endocrine cells and neurons where it may have both extracellular and intracellular functions. Extracellular roles for CgB are dependent on its proteolytic processing within secretory granules to form smaller peptides that may have a role in the neuroendocrine/sympathoadrenal stress response to systemic infection, and CgB fragments may also have an autocrine inhibitory role in the release of co-stored hormones, such as insulin.

### SPECIFICATION SUMMARY

**Antigen:** Synthetic peptide derived from the C-terminus (aa 641-655) of chromogranin B (accession no. NP\_001810. This sequence is identical in human, mouse, and rat chromogranin B.

**Host Species:** Rabbit

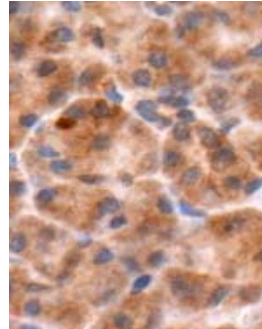
**Specificity:** This antibody recognizes human, mouse, and rat chromogranin B.

### APPLICATIONS

**Immunoblotting:** use diluted 1:2,500-1:10,000. A band of 110kDa is detected.

Although the predicted mw of CgB is ~76kDa, the highly acidic nature of CgB causes it to run at a higher mw in SDS-PAGE.

**Immunohistochemistry:** use diluted 1:500-1:5,000.



CgB detected in human pancreas with product no. 26102 diluted 1:1,000.

### DILUTION INSTRUCTIONS

Dilute in PBS or medium that is identical to that used in the assay system.

### STORAGE AND STABILITY

This antibody is stable for at least one (1) year at -20°C to -70°C. Avoid multiple freeze-thaw cycles.

### PRODUCT REFERENCE

Thompson ME et al. 1992. Prolactin granulogenesis is associated with increased secretogranin expression and aggregation in the Golgi apparatus of GH<sub>4</sub>C<sub>1</sub> cells. *Endocrinology* 131: 318-326.

*For in vitro investigational use only. Not intended for diagnostic or therapeutic applications.*