

## Anti-Bim (IN) Antibody

### ORDERING INFORMATION

**Catalog No.:** 2414

**Size:** 100ug IgG in PBS, pH 7.4, purified by immunoaffinity chromatography.

### BACKGROUND

A novel BH3 domain-containing protein was recently identified and designated Bim or BOD from human, mouse, and rat. Bim/BOD interacts with diverse members in the pro-survival Bcl-2 subfamily including Bcl-2, Bcl-x<sub>L</sub>, and Bcl-w. Bim/BOD induces apoptosis. The messenger RNA of Bim is ubiquitously expressed in multiple tissues and cell lines.

### SPECIFICATION SUMMARY

**Antigen:** Peptide corresponding to aa 22-40 of human Bim. The sequence is identical to that of mouse and is different by one amino acid from that of rat.

**Host Species:** Rabbit

**Stabilizers:** None

**Preservatives:** 0.02% sodium azide.

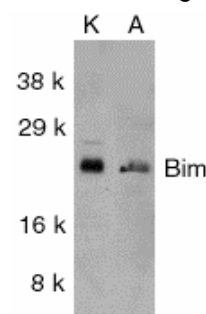
### SPECIFICITY

This antibody recognizes full-length Bim (23kDa) of human, mouse, and rat.

*For in vitro investigational use only. Not for use in therapeutic or diagnostic procedures.*

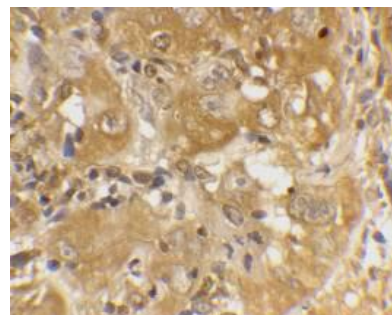
### APPLICATIONS

**Immunoblotting:** use at 1ug/ml.



Western blot analysis of Bim in K562 (K) and A549 (A) whole cell lysates with Bim antibody at 1µg/ml.

**Immunocytochemistry:** use a 10-20ug/ml



Immunohistochemical staining of Bim in human skin cancer cells with Bim antibody at 20µg/ml.

These are recommended concentrations.

Enduser should determine optimal concentration for their application.

**Positive control:** Whole cell lysate of human K562 cells.

### DILUTION INSTRUCTIONS

Dilute in PBS or medium which is identical to that used in the assay system.

### STORAGE AND STABILITY

This antibody is stable for at least one (1) year at -20°C. Avoid multiple freeze-thaw cycles.