

Anti-Apaf1 (NT) Antibody

ORDERING INFORMATION

Catalog No.: 2412

Size: 100ug IgG in PBS, pH 7.4, purified by immunoaffinity chromatography.

BACKGROUND

The mammalian homologues of the key cell death gene CED-4 in *C. elegans* has been identified recently from human and mouse and designated Apaf1 (for apoptosis protease-activating factor 1). Apaf1 binds to cytochrome c (Apaf2) and caspase-9 (Apaf3), which leads to caspase-9 activation. Activated caspase-9 in turn cleaves and activates caspase-3, one of the key proteases responsible for the proteolytic cleavage of many key proteins in apoptosis. Apaf1 can also associate with caspase-4 and caspase-8. Apaf1 is ubiquitously expressed in human tissues.

SPECIFICATION SUMMARY

Antigen: Peptide corresponding to aa 12-28 of human Apaf1. This sequence is identical in human and mouse.

Host Species: Rabbit

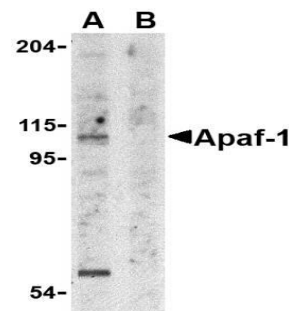
Preservatives: 0.02% sodium azide

SPECIFICITY

This antibody recognizes full-length mouse and human Apaf1 (115-130kDa).

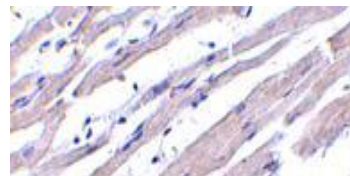
APPLICATIONS

Immunoblotting: use at 1-2ug/ml



Western blot analysis of Apaf1 in K562 cell lysate with Apaf1 (NT) antibody at 1µg/ml in the (A) absence and (B) presence of blocking peptide.

Immunohistochemistry: use at 1-2ug/ml



Immunohistochemistry of Apaf1 in human heart tissue with Apaf1 (NT) antibody at 1µg/ml.

These are recommended concentrations.

Endusers should determine optimal concentrations for their applications.

Positive control: Whole cell lysate of HeLa or K562 cells.

DILUTION INSTRUCTIONS

Dilute in PBS or medium which is identical to that used in the assay system.

STORAGE AND STABILITY

This antibody is stable for at least one (1) year at -20°C. Avoid multiple freeze-thaw cycles.

For in vitro investigational use only. Not for use in therapeutic or diagnostic procedures.