

Anti-RAIDD (CT) Antibody

ORDERING INFORMATION

Catalog No.: 2406

Size: 100ug IgG in PBS, pH 7.4, purified by immunoaffinity chromatography.

BACKGROUND

A novel cell death adapter has been identified and designated RAIDD (RIP-associated ICH-1/CED-3-homologous protein with DD) and CRADD (caspase and RIP adapter with DD). RAIDD contains a DD and a CARD (caspase recruitment domain) which interact with RIP and caspase, respectively, to transduce death signals. RAIDD is constitutively expressed in many tissues and mediates apoptosis caused by Fas and TNFR1.

SPECIFICATION SUMMARY

Antigen: Synthetic peptide corresponding to aa 181-199 at the C-terminus of human RAIDD (accession no. AAB42217).

Host Species: Rabbit

Stabilizers: None

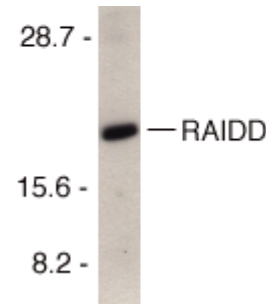
Preservatives: 0.02% sodium azide.

SPECIFICITY

This antibody recognizes full-length human RAIDD (22kDa).

APPLICATIONS

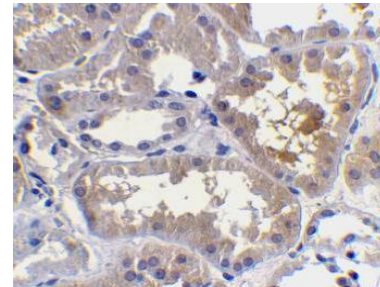
Immunoblotting : use at 1ug/ml.



Western blot analysis of RAIDD in HeLa cell lysate with RAIDD antibody at 1µg/ml.

Positive control: HeLa cell lysate.

Immunohistochemistry: use at 10ug/ml.



Immunohistochemical staining of RAIDD in human kidney with RAIDD antibody at 10µg/ml.

These are recommended concentrations. Enduser should determine optimal concentrations for their applications.

DILUTION INSTRUCTIONS

Dilute in PBS or medium which is identical to that used in the assay system.

STORAGE AND STABILITY

This antibody is stable for at least one (1) year at -20°C. Avoid multiple freeze-thaw cycles.

For in vitro investigational use only. Not for use in therapeutic or diagnostic procedures.