

Anti-Caspase-12 (IN) Antibody

ORDERING INFORMATION

Catalog No.: 2327

Size: 100ug IgG in PBS, pH 7.4, purified by immunoaffinity chromatography.

BACKGROUND

Three distinct signaling pathways lead to programmed cell death. The death receptor and mitochondrial pathways are the main pathways in which the proteases caspase-8 and caspase-9, respectively, are involved. Endoplasmic reticulum (ER) stress is the third pathway, and caspase-12 is involved. Caspase-12, localized in the ER, is activated by ER stress and mediates ER stress-induced apoptosis. Several proteins that are associated with Alzheimer's disease, including γ -secretase, presenilin, and β -amyloid precursor protein (APP), co-localize in the ER with caspase-12. Caspase-12 is ubiquitously expressed in mouse tissues.

SPECIFICATION SUMMARY

Antigen: Peptide corresponding to aa 100-116 of mouse caspase-12 (accession no. CAA73532).

Stabilizers: None

Preservatives: 0.02% sodium azide.

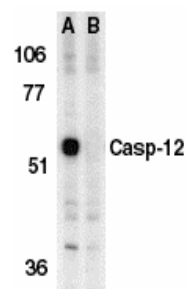
Host Species: Rabbit

SPECIFICITY

This antibody recognizes human, mouse, and rat caspase-12 (approx. 53kDa).

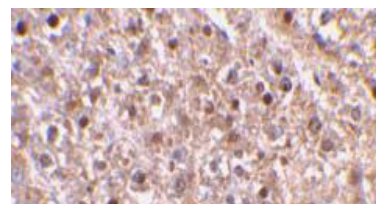
APPLICATIONS

Immunoblotting: use at 1ug/ml.



Western blot analysis of Caspase-12 in mouse brain tissue lysate in the absence (A) or presence (B) of blocking peptide with Caspase-12 antibody at 1 μ g/ml.

Immunohistochemistry: use at 2ug/ml.



Immunohistochemical staining of Caspase-12 in mouse liver using Caspase-12 antibody at 2 μ g/ml.

These are recommended concentrations.

Enduser should determine optimal concentrations for their applications.

Positive control: Tissue lysate of mouse brain.

DILUTION INSTRUCTIONS

Dilute in PBS or medium which is identical to that used in the assay system.

STORAGE AND STABILITY

This antibody is stable for at least one (1) year at -20°C. Avoid multiple freeze-thaw cycles.

For in vitro investigational use only. Not for use in therapeutic or diagnostic procedures.