

Anti-AIF (CT) Antibody

ORDERING INFORMATION

Catalog No.: 2301

Size: 100ug IgG in PBS, pH 7.4, purified by immunoaffinity chromatography.

BACKGROUND

A novel protein that causes chromatin condensation and DNA fragmentation has been designated Apoptosis Inducing Factor (AIF). AIF localizes in mitochondria and translocates to the nucleus when apoptosis is induced. This event is followed by the release of cytochrome c and caspase-9 from mitochondria. AIF is highly conserved between human and mouse and widely expressed in different cell types and tissues.

SPECIFICATION SUMMARY

Antigen: Peptide corresponding to aa 593-606 at the C-terminus of human AIF. This sequence is identical to those of mouse and rat AIF.

Host Species: Rabbit

Preservatives: 0.02% sodium azide

SPECIFICITY

This antibody recognizes human, mouse, and rat AIF (67 kD).

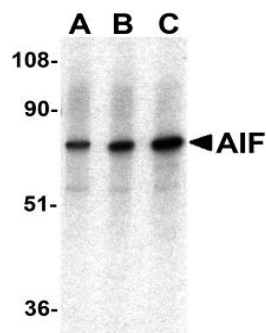
STORAGE AND STABILITY

This antibody is stable for at least one (1) year at -20°C. Avoid multiple freeze-thaw cycles.

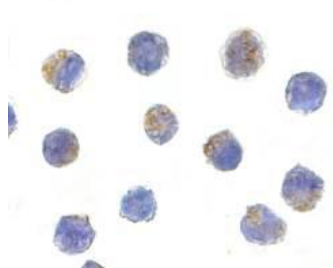
APPLICATIONS

Immunoblotting: use at 0.5-2ug/ml.

Western blot analysis of AIF in K562 cell lysate with AIF antibody at (A) 0.5, (B)1, and (C)2 µg/ml.



Immunocytochemistry: use at 5ug/ml.



Immunocytochemical staining of AIF in K562 cells with AIF antibody at 5 µg/ml.

These are recommended concentrations. Enduser should determine optimal concentrations for their applications.

Positive control: K562 cells or whole cell lysate.

DILUTION INSTRUCTIONS

Dilute in PBS or medium which is identical to that used in the assay system.

For in vitro investigational use only. Not for use in therapeutic or diagnostic procedures.