

Atg4D Polyclonal Antibody

ORDERING INFORMATION

Catalog No. 23003 **Size** 100ug

Format: Peptide affinity-purified antibody in PBS, pH 7.4, 50% glycerol, 0.09% sodium azide.

Concentration: 1mg/ml

BACKGROUND

Autophagy is a catabolic process that results in the degradation of bulk cytoplasmic contents within autophagosomes and lysosomes. Recent studies demonstrated that Atg4D is a substrate for caspase-3 during apoptosis. Truncated Atg4D has increased priming and delipidation effects on the Atg8 paralogue GABARAP-L1 *in vitro* and induces cell death when overexpressed in human cells. In addition, Atg4D-mediated apoptosis is facilitated by a putative C-terminal BH3 domain and is preceded by recruitment of Atg4D to mitochondria, suggesting that Atg4D plays an important role at the interface between autophagy and apoptosis.

SPECIFICATION SUMMARY

Antigen: Synthetic peptide corresponding to amino acids at the C-terminus of human Atg4D.

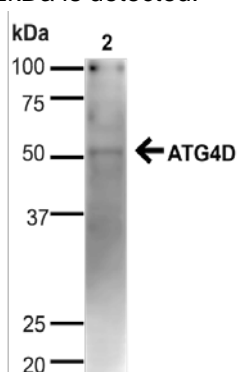
Accession no. NP_001268433.1 **Gene ID** 84971 **SwissProt** Q86TL0

Host Species: Rabbit

Specificity: This antibody recognizes human Atg4D.

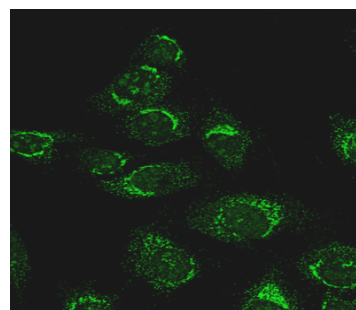
APPLICATIONS

Immunoblotting: use at 1-2ug/ml. A band of ~52kDa is detected.



Detection of Atg4D in 20ug HeLa cell lysate.

Immunofluorescence: use at 10ug/ml.



Detection of Atg4D in formaldehyde-fixed C2C12 cells.

These are recommended concentrations.

Endusers should determine optimal concentrations for their applications.

DILUTION INSTRUCTIONS

Dilute in PBS or medium that is identical to that used in the assay system.

STORAGE AND STABILITY

This antibody is stable for at least one (1) year at -20°C. Store product in appropriate aliquots to avoid multiple freeze-thaw cycles.

For in vitro investigational use only. Not for use in therapeutic or diagnostic procedures.