

## Anti-FLASH Antibody

### ORDERING INFORMATION

**Catalog No.:** 2271

**Size:** 100ug IgG in PBS, pH 7.4, purified by immunoaffinity chromatography.

### BACKGROUND

A mammalian homologue of CED-4 has been identified and designated FLASH (FLICE-associated huge protein). FLASH is involved in Fas-induced apoptosis. FLASH interacts with the DEDs of caspase-8 and FADD through the DED-like domain of FLASH, resulting in activation of caspase-8. FLASH is expressed in multiple tissues and cell types.

### SPECIFICATION SUMMARY

**Antigen:** Peptide corresponding to aa 1253-1268 of human FLASH (accession no. AF165161). This sequence differs by one amino acid from that of mouse.

**Host Species:** Rabbit

**Stabilizers:** None

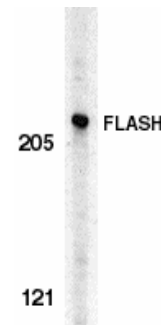
**Preservatives:** 0.02% sodium azide.

### SPECIFICITY

This antibody recognizes human and mouse FLASH (220kDa).

### APPLICATIONS

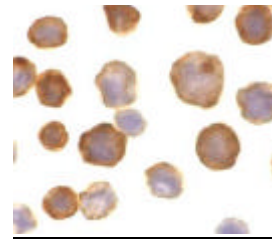
*Immunoblotting:* use at 0.5ug/ml.



Western blot analysis of FLASH in HeLa cell lysate with FLASH antibody at 0.5µg/ml.

*Positive control:* HeLa cell lysate.

*Immunocytochemistry:* use at 10ug/ml.



Immunocytochemical staining of FLASH in HeLa cells with FLASH antibody at 10µg/ml.

These are recommended concentrations. Enduser should determine optimal concentrations for their applications.

### DILUTION INSTRUCTIONS

Dilute in PBS or medium which is identical to that used in the assay system.

### STORAGE AND STABILITY

This antibody is stable for at least one (1) year at -20°C. Avoid multiple freeze-thaw cycles.

*For in vitro investigational use only. Not for use in therapeutic or diagnostic procedures.*