

Anti-AIF (IN) Antibody

ORDERING INFORMATION

Catalog No.: 2267

Size: 100ug IgG in PBS, pH 7.4, purified by immunoaffinity chroma-tography.

BACKGROUND

A novel protein that causes chromatin condensation and DNA fragmentation has been designated Apoptosis Inducing Factor (AIF). AIF localizes in mitochondria and translocates to the nucleus when apoptosis is induced. This event is followed by the release of cytochrome c and caspase-9 from mitochondria. AIF is highly conserved between human and mouse and widely expressed in different cell types and tissues.

SPECIFICATION SUMMARY

Antigen: Peptide corresponding to aa 517-531 of human AIF. This sequence is identical to those of mouse and rat AIF.

Host Species: Rabbit

Preservatives: 0.02% sodium azide.

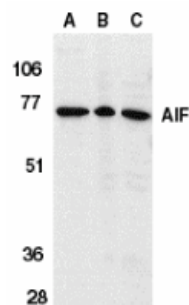
SPECIFICITY

This antibody recognizes human, mouse, and rat AIF (67 kDa).

For in vitro investigational use only. Not for use in therapeutic or diagnostic procedures.

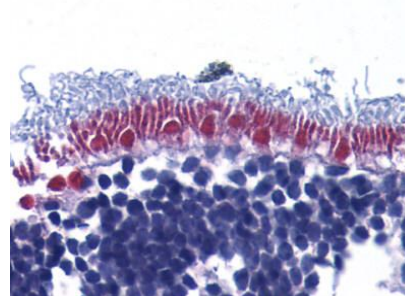
APPLICATIONS

Immunoblotting: use at 1-10ug/ml



Western blot analysis of AIF in K562 cell lysate (A), rat heart (B), and mouse heart (C) tissue lysates with AIF (IN) antibody at 1µg/ml.

Immunohistochemistry: use at 10ug/ml



Immunohistochemistry of AIF in human retina with AIF (IN) antibody at 10µg/ml.

These are recommended concentrations. Endusers should determine optimal concentrations for their applications.

Positive control: Whole cell lysate from K562 cells.

DILUTION INSTRUCTIONS

Dilute in PBS or medium which is identical to that used in the assay system.

STORAGE AND STABILITY

This antibody is stable for at least one (1) year at -20°C. Avoid multiple freeze-thaw cycles.