

## Anti-Survivin (CT) Antibody

### ORDERING INFORMATION

**Catalog No.:** 2235

**Size:** 100ug IgG in PBS, pH 7.4, purified by immunoaffinity chromatography.

### BACKGROUND

Apoptosis can be prevented by the inhibitor of apoptosis proteins (IAPs). IAPs constitute a conserved gene family that binds to and inhibits cell death proteases. A novel IAP has been identified and designated Survivin. Survivin interacts with the processed form of caspase-3 and inhibits its proteolytic activity. Survivin is expressed predominantly in tissues of embryos, transformed cell lines, and many human cancers.

### SPECIFICATION SUMMARY

**Antigen:** Peptide corresponding to aa 129-142 of human Survivin (accession no. NP\_001159).

**Host Species:** Rabbit

**Stabilizers:** None

**Preservatives:** 0.02% sodium azide.

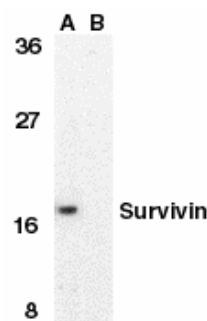
### SPECIFICITY

This antibody recognizes human Survivin (17kDa).

*For in vitro investigational use only. Not for use in therapeutic or diagnostic procedures.*

### APPLICATIONS

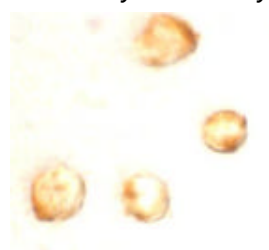
**Immunoblotting:** use at 1ug/ml.



Western blot analysis of Survivin in MOLT4 cell lysate in the absence (A) or presence (B) of blocking peptide with Survivin (CT) antibody at 1µg/ml.

**Positive control:** MOLT4 cell lysate.

**Immunocytochemistry:** use at 10ug/ml.



Immunocytochemical staining of MOLT4 cells with Survivin (CT) antibody at 10µg/ml.

These are recommended concentrations. Enduser should determine optimal concentrations for their applications.

### DILUTION INSTRUCTIONS

Dilute in PBS or medium which is identical to that used in the assay system.

### STORAGE AND STABILITY

This antibody is stable for at least one (1) year at -20°C. Avoid multiple freeze-thaw cycles.