

Streptococcus pneumoniae Monoclonal Antibodies

ORDERING INFORMATION

Catalog Nos.:

22001 clone XI64 IgM
22002 clone XI126 IgG2b
22004 clone XIR1323 IgM

Format: 200ug in PBS, pH 7.4.

SPECIFICATION SUMMARY

Antigen for 22001 and 22002: heat-killed *S. pneumoniae* strain R36A.

Antigen for 22004: full-length recombinant pneumococcal surface protein A (PspA) type 2 strain D39.

Host species: Mouse

Specificity: These antibodies recognize pneumococcal surface protein A.

APPLICATIONS

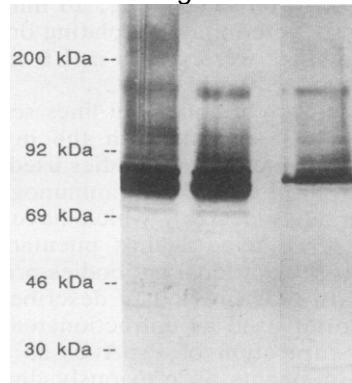
ELISA:	Catalog No.	Titer
	22001	1: 16,000
	22002	1: 64,000
	22004	1: 32,000

ELISA is an indirect assay against *Strep. pneumoniae* cells on the solid phase. Titrations start with antibodies at 1mg/ml.

Reactivity of monoclonal antibodies specific for PspA with clinical isolates of <i>Streptococcus pneumoniae</i>			
Capsular serotype	No. tested	MAb #22001	MAb #22002
3	10	5	5
4	11	1	4
6	22	4	7
7	1	0	0
9	3	0	3
14	3	0	0
16	1	0	0
19	3	0	0
23	3	1	1

See reference 3 below.

Immunoblotting:



Immunoblot of recombinant pneumococcal surface protein A (PspA) reacted with **#22002**. Lanes: 1 and 2, phage lysate from full-length PspA+ clone with and without induction by isopropyl-β-D-thiogalactopyranoside (IPTG), respectively; 3, cell wall extract from pneumococcal type 2 strain D39. See reference 4 below.

In vivo protection: These antibodies protect against lethal pneumococcal infection in a mouse model. See reference 1 below.

DILUTION INSTRUCTIONS

Dilute in PBS or medium that is identical to that used in the assay system.

***Streptococcus pneumoniae* Monoclonal Antibodies**

STORAGE AND STABILITY

These antibodies are stable for at least one (1) year from date of receipt at -20°C to -70°C. Store product in appropriate aliquots to avoid multiple freeze-thaw cycles.

PRODUCT REFERENCES

1. McDaniel L. et al. 1984 Monoclonal antibodies against protease-sensitive pneumococcal antigens can protect mice from fatal infection with *Streptococcus pneumoniae*. J Exp Med 160: 386-397.
2. McDaniel L. et al. 1987 A protective monoclonal antibody that reacts with a novel antigen of pneumococcal teichoic acid. Microbial Pathogenesis 3: 249-260.
3. Crain MJ et al. 1990 Pneumococcal surface protein A (PspA) is serologically highly variable and is expressed by all clinically important capsular serotypes of *Streptococcus pneumoniae*. Infection and Immunity 58: 3293-3299.
4. McDaniel L. et al. 1991 PspA, A surface protein of *Streptococcus pneumoniae*, is capable of eliciting protection against Pneumococci of more than one capsular type. Infection and Immunity 59: 222-228.

For in vitro investigational use only. Not for use in therapeutic or diagnostic procedures.