

## Anti-Bcl10 (NT) Antibody

### ORDERING INFORMATION

**Catalog No.:** 2161

**Size:** 100ug IgG in PBS, pH 7.4, purified by immunoaffinity chromatography.

### BACKGROUND

A novel CARD containing protein was recently identified and designated Bcl10, CIPER, mE10, CARMEN, and CLAP. Bcl10 is a cellular homolog of the equine herpesvirus-2 E-10 gene. Overexpression of Bcl10 induces JNK, p38, and NF- $\kappa$ B activation. Bcl10 interacts with caspase-9, enhances pro-caspase-9 processing, and induces apoptosis through caspase-9 activation. Bcl10 exhibits a variety of mutations in MALT lymphoma and in B and T cell lymphomas indicating that it may be commonly involved in the pathogenesis of human tumors. Bcl10 is expressed in many human and murine tissues and cell lines.

### SPECIFICATION SUMMARY

**Antigen:** Peptide corresponding to aa 5-19 of human Bcl10.

**Host Species:** Rabbit

**Stabilizers:** None

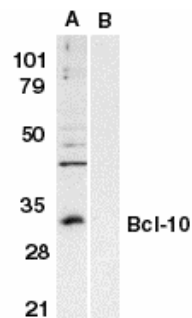
**Preservatives:** 0.02% sodium azide.

### SPECIFICITY

This antibody recognizes human Bcl10 (31kDa).

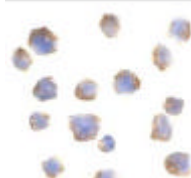
### APPLICATIONS

*Immunoblotting:* use at 1ug/ml.



Western blot analysis of Bcl-10 in Raji whole cell lysate in the absence (A) or presence (B) of blocking peptide with Bcl10 antibody at 1 $\mu$ g/ml.

*Immunocytochemistry:* use at 1ug/ml.



Immunocytochemical staining of Bcl10 in Raji cells with Bcl10 antibody at 1 $\mu$ g/ml.

These are recommended concentrations.

Enduser should determine optimal concentration for their application.

*Positive control:* Whole cell lysate of Raji cells.

### DILUTION INSTRUCTIONS

Dilute in PBS or medium which is identical to that used in the assay system.

### STORAGE AND STABILITY

This antibody is stable for at least one (1) year at -20°C. Avoid multiple freeze-thaw cycles.

*For in vitro investigational use only. Not for use in therapeutic or diagnostic procedures.*