

Anti-ADAM10 /KUZ /MADM Antibody

ORDERING INFORMATION

Catalog No.: 2051

Format: 100ug in PBS, pH 7.4, 0.02% sodium azide. Purified by peptide immunoaffinity chromatography.

BACKGROUND

TNF α , Notch and its ligand delta are all membrane-bound molecules which are cleaved by proteases to release mature proteins or functional receptors. ADAM10, a metalloprotease-disintegrin in the family of mammalian ADAM (for a disintegrin and metalloprotease) was recently found to cleave TNF α , Notch and its ligand delta. The genes encoding human, mouse, and bovine ADAM10 have been cloned and designated ADAM10, Kuzbanian (KUZ), and MADM, respectively. These genes are expressed in a variety of human and bovine tissues.

SPECIFICATION SUMMARY

Antigen: Peptide corresponding to aa 732-748 of human ADAM10. This sequence is identical to those of bovine and rat and differs from mouse by one amino acid.

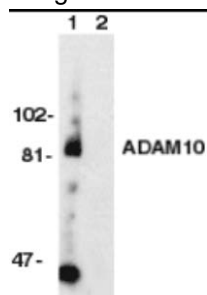
Accession No.: NP_001101

Host Species: Rabbit

Specificity: Human. In immunoblots a band of 85kDa is detected and may represent precursor. Lower mw bands are detected in some cell lines, including Jurkat, and may represent the processed mature protein.

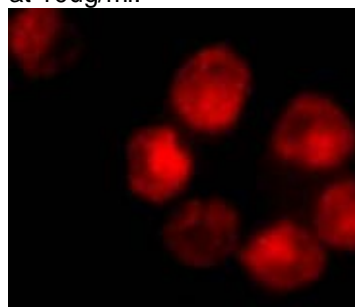
APPLICATIONS

Immunoblotting: use at 1-10ug/ml.



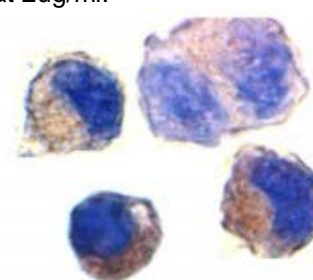
Western blot analysis of ADAM10 in Jurkat whole cell lysate.

Immunofluorescence: use at 10ug/ml.



Immunofluorescent detection of ADAM10 in K562 cells.

Immunocytochemistry: use at 2ug/ml.



Immunochemical detection of ADAM10 in K562 cells.

Endusers should determine optimal concentrations for their applications.

DILUTION INSTRUCTIONS

Dilute in PBS or medium that is identical to that used in the assay system.

STORAGE AND STABILITY

This antibody can be stored at 4oC for three months and for one year at -20oC. Store product in appropriate aliquots to avoid multiple freeze-thaw cycles.

For in vitro investigational use only. Not intended for use in therapeutic or diagnostic procedures.