

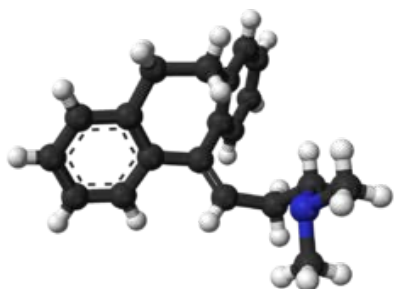
Amitriptyline Monoclonal Antibodies

ORDERING INFORMATION

Catalog No.	Clone No.	MAB Subtype	Size	Library Pack No.	100ug/clone
19201	AM10-106.9	IgG1	100ug, 500ug	192101	2 clones
19202	AM11-209.1	IgG1	100ug, 500ug		

Format: Protein G-purified antibody in PBS, pH 7.4.

BACKGROUND



Amitriptyline is used to treat a number of mental illnesses including major depressive disorder and anxiety disorder, and less commonly attention deficit hyperactivity disorder and bipolar disorder. Other uses include prevention of migraines, treatment of neuropathic pain such as fibromyalgia and postherpetic neuralgia and less commonly insomnia. Amitriptyline was discovered in 1960 and approved by the FDA in 1961. It is on the WHO Model List of Essential Medicines.

SPECIFICATION SUMMARY

Antigen: Amitriptyline conjugated to KLH.

Host Species: Mouse

Specificity: These antibodies recognize amitriptyline.

APPLICATIONS

These antibodies have been qualified for use in ELISA to detect amitriptyline.

DILUTION INSTRUCTIONS

Dilute in PBS or medium that is identical to that used in the assay system.

STORAGE AND STABILITY

These antibodies are stable for at least one (1) year at -20°C to -70°C. Store product in appropriate aliquots to avoid multiple freeze-thaw cycles.

For in vitro investigational use only. Not for use in therapeutic or diagnostic procedures.