

KT3 Affinity-Purified Polyclonal Antibody

ORDERING INFORMATION

| Catalog No. | Size |
|-------------|-------|
| 18858 | 1mg |
| 18858-01 | 100ug |

Format: 1mg/ml in Phosphate Buffered Saline (PBS), pH 7.2, 0.09% sodium azide.

BACKGROUND

The KT3 epitope tag is derived from SV40 large T antigen and corresponds to amino acids KPPTPPPEPET. It is frequently used as an epitope tag in expression vectors.

SPECIFICATION SUMMARY

Antigen: KT3 (KPPTPPPEPET) conjugated to KLH.

Host Species: Rabbit

Specificity: Antibody was affinity-purified on the peptide.

APPLICATIONS

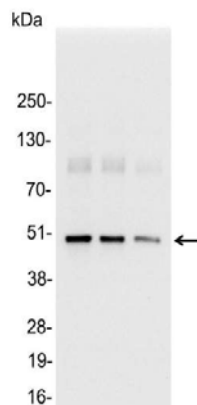
Immunoblotting: use at a dilution of 1:1,000-1:20,000.

Immunocytochemistry: use at a dilution of 1:100-1:400.

Immunoprecipitation: use 1-4ug/mg lysate.

ELISA: for detection use at a dilution of 1:1,000-1:30,000; for coating use at a dilution of 1:100-1:500.

These are recommended dilutions.
Endusers should determine optimal dilutions for their applications.



Detection of KT3-tagged fusion protein in 200, 100, and 50ng of E. coli lysate with #18858 diluted 1:25,000.

DILUTION INSTRUCTIONS

Dilute in PBS or medium that is identical to that used in the assay system.

STORAGE AND STABILITY

This antibody is stable for at least one (1) year at 2-8°C.

For in vitro investigational use only. Not for use in therapeutic or diagnostic procedures.