

## Glu-Glu (EYMPME) Affinity-Purified Polyclonal Antibody, HRP Conjugate

### ORDERING INFORMATION

<b>Catalog No.</b>	<b>Size</b>
18836P	1mg

**Format:** 1mg/ml conjugated to horseradish peroxidase (HRP) in Phosphate Buffered Saline (PBS), 0.2% BSA, 0.1% Pro-Clean 400. Molar enzyme/antibody ratio = 4:1.

### BACKGROUND

The Glu-Glu tag represents the peptide sequence EYMPME which is derived from the middle T antigen of mouse polyoma virus. Given the small size of this peptide, it is unlikely that modifying proteins with it will affect protein structure or function.

### SPECIFICATION SUMMARY

**Antigen:** Synthetic peptide corresponding to aa 314-319 (EYMPME) of middle T antigen of mouse polyomavirus conjugated to KLH.

**Host Species:** Goat

**Specificity:** Antibody was affinity-purified on the peptide.

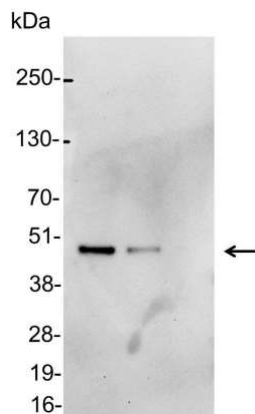
### APPLICATIONS

**Immunoblotting:** use at a dilution of 1:1,000-1:30,000.

**Immunocytochemistry:** use at a dilution of 1:200-1:500.

**ELISA:** use at a dilution of 1:10,000-1:100,000.

These are recommended dilutions. Endusers should determine optimal dilutions for their applications.



Detection of Glu-Glu-tagged protein in E. coli lysate containing 200, 100, and 50ng of tagged protein with #18836P diluted 1:5,000.

### DILUTION INSTRUCTIONS

Dilute in PBS or medium that is identical to that used in the assay system.

### STORAGE AND STABILITY

This antibody is stable for at least one (1) year at 2-8°C.

*For in vitro investigational use only. Not for use in therapeutic or diagnostic procedures.*