

## Glu-Glu (EYMPME) Affinity-Purified Polyclonal Antibody,

### ORDERING INFORMATION

Catalog No.	Size
18836	1mg
18836-01	100ug

**Format:** 1mg/ml in Phosphate Buffered Saline (PBS), 0.09% sodium azide.

### BACKGROUND

The Glu-Glu tag represents the peptide sequence EYMPME which is derived from the middle T antigen of polyoma virus. Given the small size of this peptide, it is unlikely that modifying proteins with it will affect protein structure or function.

### SPECIFICATION SUMMARY

**Antigen:** Synthetic peptide corresponding to aa 314-319 (EYMPME) of middle T antigen of mouse polyomavirus conjugated to KLH.

**Host Species:** Goat

**Specificity:** Antibody was affinity-purified on the peptide.

### APPLICATIONS

**Immunoblotting:** use at a dilution of 1:1,000-1:20,000.

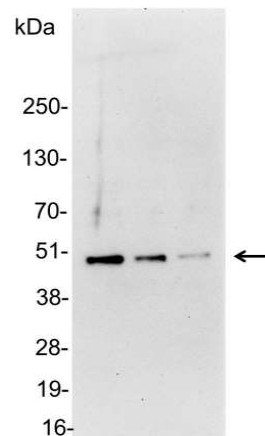
**Immunocytochemistry:** use at a dilution of 1:100-1:400.

**Immunoprecipitation:** use 1-4ug/mg lysate.

**ELISA:** for detection use at a dilution of 1:1,000-1:30,000; for coating use at a dilution of 1:100-1:500.

These are recommended dilutions.

Endusers should determine optimal dilutions for their applications.



Detection of Glu-Glu-tagged protein in 200, 100, and 50ng of E. coli lysate containing tagged fusion protein with #18836 diluted 1:5,000.

### DILUTION INSTRUCTIONS

Dilute in PBS or medium that is identical to that used in the assay system.

### STORAGE AND STABILITY

This antibody is stable for at least one (1) year at 2-8°C.

*For in vitro investigational use only. Not for use in therapeutic or diagnostic procedures.*