

## ECS (DDDDK) Affinity-Purified Polyclonal Antibody

### ORDERING INFORMATION

Catalog No.	Size
18830	1mg
18830-01	100ug

**Format:** 1mg/ml in Phosphate Buffered Saline, pH 7.2, 0.09% sodium azide.

### BACKGROUND

Enterokinase, also known as enteropeptidase, is a serine protease that catalyzes the hydrolysis of peptide bonds in proteins but, unlike other kinases, does not catalyze transfer of phosphate groups. Enterokinase cleaves proteins following a lysine at an enterokinase cleavage site, or ECS (Asp-Asp-Asp-Asp-Lys). *In vivo*, this cleavage results in trypsin-dependent activation of other pancreatic zymogens, such as chymotrypsinogen, proelastase, procarboxypeptidase and prolipase in the lumen of the gut.

### SPECIFICATION SUMMARY

**Antigen:** DDDDK conjugated to KLH.

**Host Species:** Goat

**Specificity:** Antibody was affinity-purified on the peptide.

### APPLICATIONS

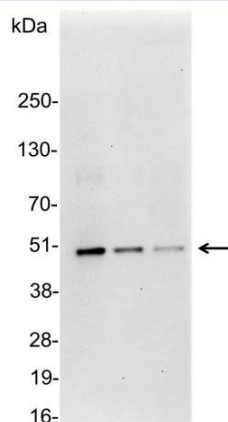
**Immunoblotting:** use at a dilution of 1:1,000-1:20,000.

**Immunocytochemistry:** use at a dilution of 1:100-1:400.

**ELISA:** for detection use at a dilution of 1:1,000-1:30,000; for coating use at a dilution of 1:100-1:500.

**Immunoprecipitation:** use 1-4ug/mg lysate.

These are recommended dilutions. Endusers should determine optimal dilutions for their applications.



Detection of ECS-tagged protein in 200, 100, and 50ng of *E. coli* lysate containing tagged fusion protein with #18830 diluted 1:25,000.

### DILUTION INSTRUCTIONS

Dilute in PBS or medium that is identical to that used in the assay system.

### STORAGE AND STABILITY

This antibody is stable for at least one (1) year at 2-8°C.

*For in vitro investigational use only. Not for use in therapeutic or diagnostic procedures.*