

Glutathione S-Transferase (GST) Monoclonal Antibody

ORDERING INFORMATION

Catalog No.	Clone No.	Size
18803	3G10	100ul

Format: 1mg/ml Protein G-purified antibody in Phosphate Buffered Saline, pH 7.4.

BACKGROUND

A GST-tag is often used to separate and purify proteins that contain the GST-fusion protein. The tag is 220 amino acids which, compared to tags such as the myc-tag, is quite large. It can be fused to either the N-terminus or C-terminus of a protein. Many commercially available sources of GST-tagged plasmids include a thrombin domain for cleavage of the GST tag during protein purification.

SPECIFICATION SUMMARY

Antigen: GST protein of *Schistosoma japonicum* expressed in *E. coli*.

Host Species: Mouse

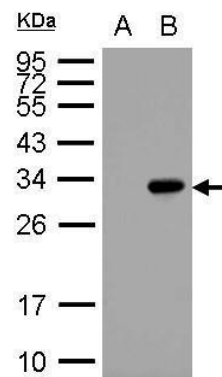
Antibody subtype: IgG1

Specificity: This antibody recognizes GST.

APPLICATIONS

Immunoblotting: use at 0.2-2ug/ml.

These are recommended concentrations.
Endusers should determine optimal concentrations for their applications.



Detection of GST-tagged protein in *E. coli* lysate with #18803 at 0.2ug/ml.

DILUTION INSTRUCTIONS

Dilute in PBS or medium that is identical to that used in the assay system.

STORAGE AND STABILITY

This antibody is stable for at least one (1) year at -20°C. Store product in appropriate aliquots to avoid multiple freeze-thaw cycles.

For in vitro investigational use only. Not for use in therapeutic or diagnostic procedures.