

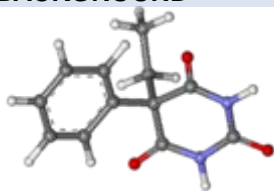
Phenobarbital Monoclonal Antibodies

ORDERING INFORMATION

Catalog No.	Clone No.	MAb Subtype	Size	Library Pack No.	100ug/clone
16401	PB 9-30.17.4.16	IgG1	100ug, 500ug	164101	All 5 clones
16402	PB10-8.3.21.1	IgG1	100ug, 500ug		
16403	PB10-24.13.4	IgG1	100ug, 500ug		
16404	PB10-61.1.3	IgG1	100ug, 500ug		
16405	PB12-99.3.1	IgG1	100ug, 500ug		

Format: Protein G-purified antibody in PBS, pH 7.4.

BACKGROUND



Phenobarbital is a barbiturate recommended by the World Health Organization for the treatment of certain types of epilepsy. In developed countries it is commonly used to treat seizures in young children, while other medications are generally used in older children and adults. Phenobarbital works by increasing the activity of the inhibitory neurotransmitter GABA.

SPECIFICATION SUMMARY

Antigen: Phenobarbital conjugated to KLH.

Host Species: Mouse

Specificity: These antibodies recognize phenobarbital and cross-react to different degrees with p-hydroxy-phenobarbital:

% Cross-Reactivity with p-hydroxy-phenobarbital

16401	12.2
16402	23.4
16403	15.1
16404	178.5
16405	23.6

APPLICATIONS

These antibodies have been qualified for use in ELISA to detect phenobarbital.

DILUTION INSTRUCTIONS

Dilute in PBS or medium that is identical to that used in the assay system.

STORAGE AND STABILITY

These antibodies are stable for at least one (1) year at -20°C to -70°C. Store product in appropriate aliquots to avoid multiple freeze-thaw cycles.

For in vitro investigational use only. Not for use in therapeutic or diagnostic procedures.