

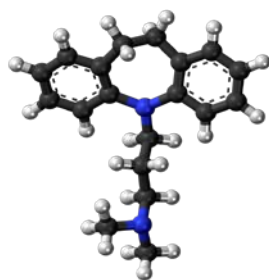
Imipramine Monoclonal Antibodies

ORDERING INFORMATION

Catalog No.	Clone No.	MAb Subtype	Size	Library Pack No.	100ug/clone
16051	IM11-214.1	IgM*	100ug, 500ug	160111	All 3 clones
16052	IM12-342.3	IgG2b	100ug, 500ug		
16053	IM12-379.2	IgG2b	100ug, 500ug		

Format: Protein G-purified antibody in PBS, pH 7.4. *PEG-purified antibody in PBS, pH 7.4.

BACKGROUND



Imipramine is a tricyclic antidepressant of the dibenzazepine group. It is mainly used in the treatment of major depression and enuresis (inability to control urination). Imipramine, a tertiary amine, affects numerous neurotransmitter systems known to be involved in the etiology of depression, anxiety, ADHD, enuresis and numerous other mental and physical conditions. Imipramine is similar in structure to some muscle relaxants and has a significant analgesic effect and, therefore, is very useful in some pain conditions.

SPECIFICATION SUMMARY

Antigen: Imipramine conjugated to KLH.

Host Species: Mouse

Specificity: These antibodies recognize imipramine.

APPLICATIONS

These antibodies have been qualified for use in ELISA to detect imipramine.

DILUTION INSTRUCTIONS

Dilute in PBS or medium that is identical to that used in the assay system.

STORAGE AND STABILITY

These antibodies are stable for at least one (1) year at -20°C to -70°C. Store product in appropriate aliquots to avoid multiple freeze-thaw cycles.

For in vitro investigational use only. Not for use in therapeutic or diagnostic procedures.