

Glycogen Phosphorylase (muscle) Polyclonal Antibody

ORDERING INFORMATION

Catalog No.: 13808

Size: 50ug peptide immunogen affinity purified antibody in PBS containing 0.1% sodium azide.

BACKGROUND

Glycogen phosphorylase (GP) removes and converts one glucose molecule from glycogen to glucose-1-phosphate. Mammalian GPs are found in at least three isozymic forms that are distinguished by functional and structural properties as well as by the tissues in which they are preferentially expressed. In muscle, glycogen provides glucose for energy production during exercise. Glycogen storage disease (also known as McArdle's disease) is a form of autosomal recessive myopathy that is responsible for the lack of activity of muscle GP and is characterized by exercise intolerance, muscle cramps, and recurrent myoglobinuria.

SPECIFICATION SUMMARY

Antigen: Synthetic peptide conjugated to KLH.

Host Species: Rabbit

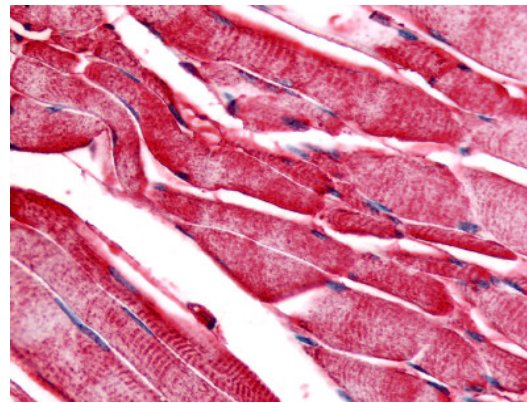
Preservatives: 0.1% sodium azide

SPECIFICITY

This antibody recognizes the C-terminal domain of human muscle GP.

APPLICATIONS

Immunohistochemistry: Use at 20ug/ml.



Skeletal muscle: Formalin-fixed, paraffin-embedded

DILUTION INSTRUCTIONS

Dilute in PBS or medium which is identical to that used in the assay system.

STORAGE AND STABILITY

This antibody is stable at 4°C (short-term) and -70°C (long-term).

For in vitro investigational use only. Not for use in therapeutic or diagnostic procedures.