

Glycogen Phosphorylase (brain) Polyclonal Antibody

ORDERING INFORMATION

Catalog No.: 13806

Size: 50ug peptide immunogen affinity purified antibody in PBS containing 0.1% sodium azide.

BACKGROUND

Glycogen phosphorylase (GP) removes and converts one glucose molecule from glycogen to glucose-1-phosphate. Mammalian GPs are found in at least three isozymic forms that are distinguished by functional and structural properties as well as by the tissues in which they are preferentially expressed. The brain isozyme of GP is associated primarily with providing an emergency glucose supply during periods of anoxia or hypoglycemia. A549 non-small cell lung carcinoma cells express solely the brain isozyme of GP and have been used to investigate inhibitors of GP that retard cell growth.

SPECIFICATION SUMMARY

Antigen: Synthetic peptide conjugated to KLH.

Host Species: Rabbit

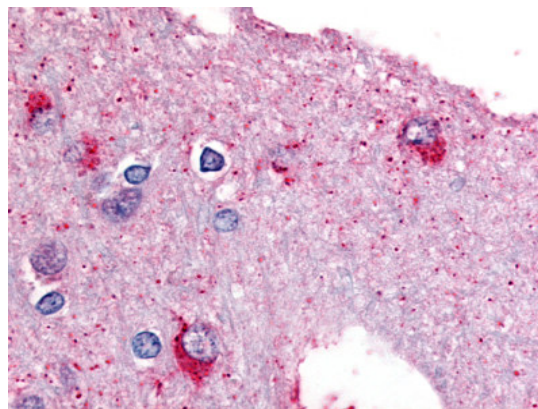
Preservatives: 0.1% sodium azide

SPECIFICITY

This antibody recognizes an internal domain of human brain GP.

APPLICATIONS

Immunohistochemistry: Use at 10ug/ml.



Brain: Formalin-fixed, paraffin-embedded

DILUTION INSTRUCTIONS

Dilute in PBS or medium which is identical to that used in the assay system.

STORAGE AND STABILITY

This antibody is stable at 4°C (short-term) and -70°C (long-term).

For in vitro investigational use only. Not for use in therapeutic or diagnostic procedures.