

Chymotrypsin Monoclonal Antibodies

ORDERING INFORMATION

Catalog No.	Clone No.	MAb Subtype	Size	Library Pack No.	100ug/clone
13601	CHYMO10-101.2	IgG1	100ug, 500ug	136101	All 4 clones
13602	CHYMO10-103.5	IgG1	100ug, 500ug		
13603	CHYMO10-104.5	IgG1	100ug, 500ug		
13604	CHYMO10-104.10	IgG1	100ug, 500ug		

Format: Protein G-purified antibody in PBS, pH 7.4

BACKGROUND

Chymotrypsin is a proteolytic enzyme produced by the pancreas that acts in the duodenum. Chymotrypsin preferentially cleaves peptide amide bonds where the carboxyl side of the amide bond (the P₁ position) is a large hydrophobic amino acid (tyrosine, tryptophan, and phenylalanine). These amino acids contain an aromatic ring in their sidechain that fits into a 'hydrophobic pocket' (the S₁ position) of the enzyme. The proenzyme chymotrypsinogen is activated by trypsin.

SPECIFICATION SUMMARY

Antigen: Purified human pancreatic chymotrypsin.

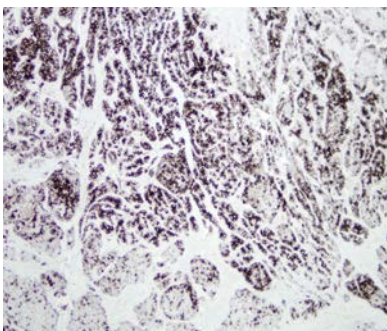
Host Species: Mouse

Specificity: These antibodies recognize human pancreatic chymotrypsin. They do not cross-react with human pancreatic trypsin.

APPLICATIONS

ELISA: These antibodies have been qualified for use in ELISA to detect human pancreatic chymotrypsin.

Immunohistochemistry: Catalog no. 13604 has been qualified for detecting human pancreatic chymotrypsin in paraffin-embedded tissue.



#13604, paraffin-embedded human pancreas.

DILUTION INSTRUCTIONS

Dilute in PBS or medium that is identical to that used in the assay system.

STORAGE AND STABILITY

These antibodies are stable for at least one (1) year at -20°C to -70°C. Store product in appropriate aliquots to avoid multiple freeze-thaw cycles.

For in vitro investigational use only. Not intended for use in therapeutic or diagnostic procedures.