

## Aurora A Polyclonal Antibody

### ORDERING INFORMATION

**Catalog No.:** 13040

**Format:** 100ug antigen-affinity purified IgG in Tris-citrate/phosphate buffer, pH 7-8, 0.09% sodium azide.

### BACKGROUND

Aurora kinase A, also known as serine/threonine-protein kinase 6, is an enzyme that in humans is encoded by the *AURKA* gene. Aurora A is a member of a family of mitotic serine/threonine kinases associated with important processes during mitosis and meiosis. Aurora A is activated by one or more phosphorylations, and its activity peaks during the G2 phase to M phase transition in the cell cycle. Aurora A dysregulation has been associated with high occurrence of cancer.

### SPECIFICATION SUMMARY

**Antigen:** Synthetic peptide representing a portion of the protein encoded within exon 5.

**Accession no.:** NP\_003591.2

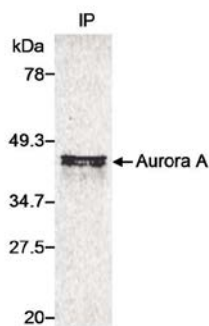
**Gene ID:** 6790

**Host Species:** Rabbit

**Specificity:** This antibody reacts with human Aurora kinase A, and the epitope recognized maps to a region between residues 50-100 of human Aurora kinase A. Based on 100% sequence identity this antibody is predicted to react with chimpanzee, crab-eating macaque, and Northern white-cheeked gibbon.

### APPLICATIONS

*Immunoprecipitation:* 2-10ug/mg lysate.



Immunoprecipitation of human Aurora A from <sup>35</sup>S-Met-labeled whole cell lysate of cells transfected with a human Aurora A expression construct. Detection by autoradiography.

These are recommended concentrations. Endusers should determine optimal concentrations for their applications.

### DILUTION INSTRUCTIONS

Dilute in PBS or medium that is identical to that used in the assay system.

### STORAGE AND STABILITY

This antibody is stable at 2 - 8°C for one (1) year from date of receipt.

*For in vitro investigational use only. Not intended for use in therapeutic or diagnostic procedures.*