

AMPK alpha-1 Polyclonal Antibody

ORDERING INFORMATION

Catalog No.: 13008

Size: 100ug IgG in 0.1 ml Tris citrate/
phosphate, pH 7-8.

BACKGROUND

AMP-activated protein kinase (AMPK) is a heterotrimeric protein made up of a catalytic alpha subunit and regulatory beta and gamma subunits. There are two distinct genes for the alpha subunit, alpha1 and alpha2. AMPK alpha 1 is the serine/threonine kinase catalytic subunit of the AMPK. AMPK is responsible for regulating fatty acid and cholesterol synthesis.

SPECIFICATION SUMMARY

Antigen: Synthetic peptide representing a portion of the protein encoded within exon 8.

Host Species: Rabbit

Accession no.: BAA36547.1

Gene ID: 5562

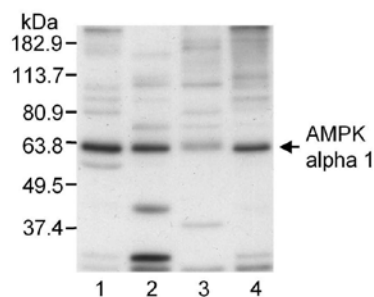
Preservatives: 0.09% sodium azide

SPECIFICITY

This antibody reacts with human, mouse, rat and bovine AMP activated protein kinase, alpha-1 catalytic subunit. Based on 100% sequence identity, this antibody is predicted to react with Chicken, Turkey, Dog, Horse, Rabbit, Guinea pig, Pig, Panda, Orangutan, Rhesus Monkey, Gorilla, Chimpanzee, West Indian ocean coelacanth, Medaka fish, Nile tilapia, Duckbill platypus and Three-spined stickleback. Antibody is affinity purified.

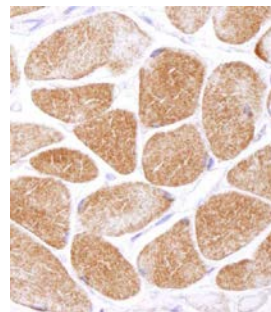
APPLICATIONS

Immunoblotting: use at 0.2-2ug/ml



Detection of AMPK alpha 1 in extracts of (1) bovine aortic endothelial cells, (2) rat aortic smooth muscle cells, (3) HepG2 cells, and (4) human aortic endothelial cells with #13008 at 2ug/ml.

Immunohistochemistry: use at 0.2-2ug/ml.



Detection of AMPK alpha 1 in FFPE section of human muscle with #13008 at 0.2ug/ml.

DILUTION INSTRUCTIONS

Dilute in PBS or medium that is identical to that used in the assay system.

STORAGE AND STABILITY

This antibody is stable at 2-8°C for 1 year.

For in vitro investigational use only. Not for use in therapeutic or diagnostic procedures.