

## Manganese Superoxide Dismutase Polyclonal Antibody

### ORDERING INFORMATION

**Catalog No.:** 13004

**Format:** 100ul (1mg/ml) in PBS pH 7.0, 50% glycerol, and 0.09% sodium azide.

### BACKGROUND

Superoxide dismutase (SOD) is an endogenously produced intracellular enzyme that catalyzes the dismutation of the superoxide radical  $O_2^-$  to oxygen and hydrogen peroxide which are then metabolized to  $H_2O$  and  $O_2$  by catalase and glutathione peroxidase. SODs play an important role in antioxidant defense mechanisms. Three different SOD isoenzymes are found in mammalian cells: SOD1, SOD2, and SOD3.

### SPECIFICATION SUMMARY

**Antigen:** Rat Mn SOD

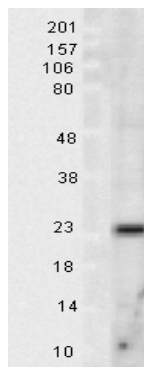
**Accession no.:** P07895, NP\_058747.1

**Host Species:** Rabbit

**Specificity:** This antibody detects a 25kDa protein on SDS-PAGE immunoblots corresponding to the molecular mass of Mn SOD. This antibody recognizes human, monkey, mouse, rat, bovine, canine, porcine, hamster, gerbil, guinea pig, rabbit, sheep, chicken, and *Xenopus* Mn SOD.

### APPLICATIONS

*Immunoblotting:* use at 0.5-1.0ug/ml



Detection of Mn SOD in rat brain tissue extract

*Immunohistochemistry:* use at 1-10ug/ml

These are recommended concentrations. Endusers should determine optimal concentrations for their applications.

### DILUTION INSTRUCTIONS

Dilute in PBS or medium that is identical to that used in the assay system.

### STORAGE AND STABILITY

This antibody is stable for at least one (1) year at -20°C. Avoid multiple freeze-thaw cycles.

*For in vitro investigational use only. Not intended for use in therapeutic or diagnostic procedures.*