

## Cytochrome P450 Reductase Polyclonal Antibody

### ORDERING INFORMATION

**Catalog nos.:** 13000-50 (50ug)

**Format:** Protein A-purified antibody in PBS, pH 7.2, 50% glycerol, 0.09% sodium azide,.

### BACKGROUND

NADPH-cytochrome P450 reductase is a microsomal component essential for transferring reducing equivalents from NADPH to microsomal heme-oxygenase isozymes (HO-1 and HO-2), to the various cytochrome P450 isozymes and to cytochrome c and b<sub>5</sub>. Cytochrome P450 reductase has been identified in various species with molecular weights in the range of 76-81kDa. This enzyme contains a short hydrophobic N-terminus that anchors it to the endoplasmic reticulum and nuclear envelope.

### SPECIFICATION SUMMARY

**Antigen:** Native rat cytochrome P450 reductase.

**Accession no.:** P00388

**Gene ID:** 127966

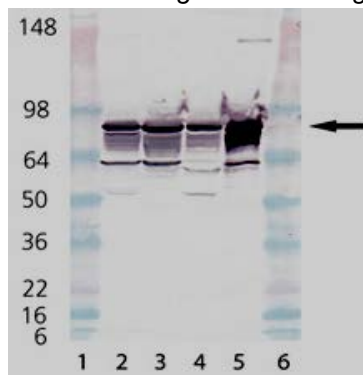
**Host Species:** Rabbit

**Antibody Class:** Polyclonal

**Specificity:** This antibody recognizes human, mouse, rat, rabbit, canine, bovine, porcine, guinea pig, hamster, monkey and sheep cytochrome P450 reductase.

### APPLICATIONS

**Immunoblotting:** Use at 1-5ug/ml. A band of ~78kDa is detected.



Detection of cytochrome p450 reductase in native rat cytochrome p450 reductase (Lane 2), human liver microsomes (Lane 3), rat liver microsomes (Lane 4), mouse liver microsomes (Lane 5).

These are recommended concentrations. Endusers should determine optimal concentrations for their application.

### DILUTION INSTRUCTIONS

Dilute in PBS or medium that is identical to that used in the assay system.

### STORAGE AND STABILITY

This antibody is stable for at least one (1) year at -20°C. Store in appropriate aliquots to avoid repeated freeze/thaw cycles.

*For in vitro investigational use only. Not intended for therapeutic or diagnostic procedures.*