

## ASIC1 Monoclonal Antibody

### ORDERING INFORMATION

**Catalog No.:** 11573 (clone S271-44)  
**Size:** 100ug in PBS, pH 7.4; 50% glycerol, 0.09% sodium azide. Purified by Protein G affinity chromatography.

### BACKGROUND

Acid sensing (proton-gated) ion channel 1 (ASIC1) is a cation channel with high affinity for sodium which is gated by extracellular protons and inhibited by the diuretic amiloride. It is also permeable for Ca(2+), Li(+) and K(+) and mediates glutamate-independent Ca(2+) entry into neurons upon acidosis. This Ca(2+) overloading is toxic for cortical neurons and may be in part responsible for ischemic brain injury. ASIC1 functions as a postsynaptic proton receptor that influences intracellular Ca(2+) concentration and calmodulin-dependent protein kinase II phosphorylation.

### SPECIFICATION SUMMARY

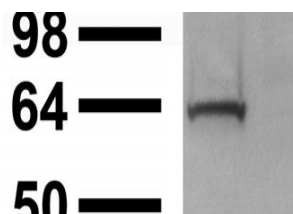
**Antigen:** Fusion protein corresponding to aa 460-526 (cytoplasmic C-terminus) of mouse ASIC1 (accession no. Q6NXK8).  
**Host Species:** Mouse  
**Antibody Class:** IgG1

### SPECIFICITY

This antibody recognizes mouse and rat ASIC1. It does not cross-react with ASIC2.

### APPLICATIONS

**Immunoblotting:** use at 1ug/ml. A band of ~60kDa is detected.



**Positive control:** Rat brain lysate.  
These are recommended concentrations. User should determine optimal concentrations for their application.

### DILUTION INSTRUCTIONS

Dilute in PBS or medium which is identical to that used in the assay system.

### STORAGE AND STABILITY

This antibody is stable for at least one (1) year at -20°C. Avoid repeated freezing and thawing.

*For in vitro investigational use only. Not for use in therapeutic or diagnostic procedures.*