

QED Bioscience Inc.

ADVANCED RESEARCH TECHNOLOGIES

Anti-TrpC5 Ca²⁺ Channel Monoclonal Antibody

ORDERING INFORMATION

Catalog No.: 11541 (clone S67-15)

Size: 100ug in PBS, pH 7.4; 50% glycerol, 0.09% sodium azide. Purified by Protein G affinity chromatography.

BACKGROUND

Ion channels are integral membrane proteins that help establish and control the small voltage gradient across the plasma membrane of living cells by allowing the flow of ions down their electrochemical gradient. TrpC5 (transient receptor potential cation channel, subfamily C, member 5) is a subtype of the TrpC family of mammalian transient receptor potential ion channels. Homomultimeric TrpC5 and heteromultimeric TrpC5-TrpC1 channels are activated by extracellular reduced thioredoxin. This activation has been associated with rheumatoid arthritis as well as with action on anesthetics such as chloroform, halothane, and propofol.

SPECIFICATION SUMMARY

Antigen: Synthetic peptide corresponding to aa 827-845 of human TrpC5 (accession no. Q9UL62).

Host Species: Mouse

Antibody Class: IgG2b

SPECIFICITY

This antibody recognizes human, mouse, and rat TrpC5.

APPLICATIONS

Immunoblotting: use at 1-10ug/ml. A band of ~110kDa is detected.

Immunohistochemistry and

Immunocytochemistry: use at 0.1-1ug/ml

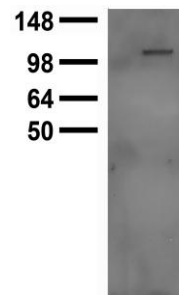
Immunofluorescence: use at 1-10ug/ml

These are recommended concentrations.

User should determine optimal

concentrations for their application.

Positive control: Rat brain lysate.



Lysate of HEK-293 cells transfected with TrpC5



Adult rat cerebellum

DILUTION INSTRUCTIONS

Dilute in PBS or medium which is identical to that used in the assay system.

STORAGE AND STABILITY

This antibody is stable for at least one (1) year at -20°C. Avoid repeated freezing and thawing.

For in vitro investigational use only. Not for use in therapeutic or diagnostic procedures.