

## Anti-Slo3 pH-Sensitive K<sup>+</sup> Channel Monoclonal Antibody

### ORDERING INFORMATION

Catalog No.: 11529 (clone S2-16)  
Size: 100ug in PBS, pH 7.4; 50% glycerol, 0.09% sodium azide. Purified by Protein G affinity chromatography.

### BACKGROUND

Ion channels are integral membrane proteins that help establish and control the small voltage gradient across the plasma membrane of living cells by allowing the flow of ions down their electrochemical gradient. Slo3 is a novel potassium channel expressed in mammalian spermatocytes. It is regulated by both intracellular pH and membrane voltage. Slo3 might play a role in alkalization-mediated K<sup>+</sup> fluxes associated with sperm capacitation.

### SPECIFICATION SUMMARY

**Antigen:** Fusion protein, corresponding to aa 1052-1121 of mouse Slo3 (accession no. AAB99742).

**Host Species:** Mouse

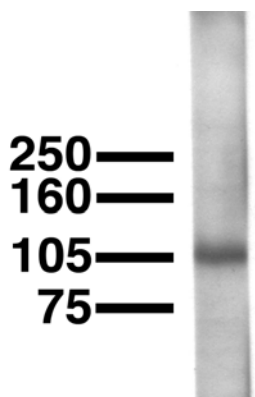
**Antibody Class:** IgG2b

### SPECIFICITY

This antibody recognizes mouse Slo3.

### APPLICATIONS

*Immunoblotting:* use at 1-10ug/ml. A band of ~115kDa is detected.



Mouse sperm membrane probed with #11529

*Immunohistochemistry and*

*Immunocytochemistry:* use at 0.1-1ug/ml

*Immunofluorescence:* use at 1-10ug/ml  
These are recommended concentrations.

User should determine optimal concentrations for their application.

*Positive control:* Mouse sperm

### DILUTION INSTRUCTIONS

Dilute in PBS or medium which is identical to that used in the assay system.

### STORAGE AND STABILITY

This antibody is stable for at least one (1) year at -20°C. Avoid repeated freezing and thawing.

*For in vitro investigational use only. Not for use in therapeutic or diagnostic procedures.*