

# Anti-BK Beta3a K<sup>+</sup> Channel Monoclonal Antibody

## ORDERING INFORMATION

**Catalog No.:** 11528 (clone S40B-18)

**Size:** 100ug in PBS, pH 7.4; 50% glycerol, 0.09% sodium azide. Purified by Protein G affinity chromatography.

## BACKGROUND

Ion channels are integral membrane proteins that help establish and control the small voltage gradient across the plasma membrane of living cells by allowing the flow of ions down their electrochemical gradient. BK channels contribute to electrical impulses, proper signal transmission, and regulation of neurotransmitter release. Research suggests that distribution of the beta subunits in the brain can modulate the BK channels to contribute to the pathophysiology of epilepsy and dyskinesia.

## SPECIFICATION SUMMARY

**Antigen:** Fusion protein corresponding to aa 1-49 (unique N-terminus) of mouse BK Beta3a (accession no. XP\_989315). This sequence is 86% homologous with human BK Beta3a.

**Host Species:** Mouse

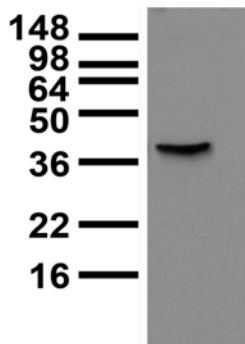
**Antibody Class:** IgG1

## SPECIFICITY

This antibody recognizes human, mouse, and rat BK Beta3a. It does not react with BK Beta1, Beta2, Beta3b or Beta4.

## APPLICATIONS

**Immunoblotting:** use at 1ug/ml. A band of ~32kDa is detected.



Lysate of COS cells transiently-transfected with BK Beta3a plasmid and probed with #11528.

**Immunohistochemistry and**

**Immunocytochemistry:** use at 0.1-1ug/ml

**Immunofluorescence:** use at 1-10ug/ml

These are recommended concentrations.

User should determine optimal concentrations for their application.

**Positive control:** Adult rat brain lysate

## DILUTION INSTRUCTIONS

Dilute in PBS or medium which is identical to that used in the assay system.

## STORAGE AND STABILITY

This antibody is stable for at least one (1) year at -20oC. Avoid repeated freezing and thawing.

*For in vitro investigational use only. Not for use in therapeutic or diagnostic procedures.*