

Anti-Slo2.1 (Slick K⁺ Channel) Monoclonal Antibody

ORDERING INFORMATION

Catalog No.: 11525 (clone S11-33)
Size: 100ug in PBS, pH 7.4; 50% glycerol, 0.09% sodium azide. Purified by Protein G affinity chromatography.

BACKGROUND

Ion channels are integral membrane proteins that help establish and control the small voltage gradient across the plasma membrane of living cells by allowing the flow of ions down their electrochemical gradient. Slo2.1 (sodium- and chloride-activated ATP-sensitive potassium channel) is a member of the mammalian Slo potassium channel gene family. The slo/slick channel is activated by intracellular Na⁺ and Cl⁻ and is inhibited by intracellular ATP. It is widely expressed in the CNS and detected in heart.

SPECIFICATION SUMMARY

Antigen: Fusion protein,, aa 564-624 of mouse Slo2.1 (accession no. XP_920840).

Host Species: Mouse

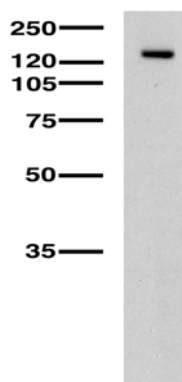
Antibody Class: IgG1

SPECIFICITY

This antibody recognizes mouse and rat Slo2.1.

APPLICATIONS

Immunoblotting: use at 1-10ug/ml. A band of ~140kDa is detected.



Adult rat brain lysate

Immunohistochemistry and

Immunocytochemistry: use at 0.1-1ug/ml

Immunofluorescence: use at 1-10ug/ml

These are recommended concentrations.

User should determine optimal concentrations for their application.

Positive control: Rat brain lysate

DILUTION INSTRUCTIONS

Dilute in PBS or medium which is identical to that used in the assay system.

STORAGE AND STABILITY

This antibody is stable for at least one (1) year at -20°C. Avoid repeated freezing and thawing.

For in vitro investigational use only. Not for use in therapeutic or diagnostic procedures.