

Anti-Cav β 2 Ca⁺² Channel Monoclonal Antibody

ORDERING INFORMATION

Catalog No.: 11524 (clone S8b-1)
Size: 100ug in PBS, pH 7.4; 50% glycerol, 0.09% sodium azide. Purified by Protein G affinity chromatography.

BACKGROUND

Ion channels are integral membrane proteins that help establish and control the small voltage gradient across the plasma membrane of living cells by allowing the flow of ions down their electrochemical gradient. Cav β subunits are involved in the transport of the pore-forming alpha1 subunit to the plasma membrane. They also shield an ER Retention signal on the alpha1 subunit, thereby guiding the pore-forming subunit to the target membrane.

SPECIFICATION SUMMARY

Antigen: Synthetic peptide corresponding to aa 189-205 of rat Cav β 2 (RSPKPSANSVTSPHSKE) (accession no. NP_446303).

Host Species: Mouse

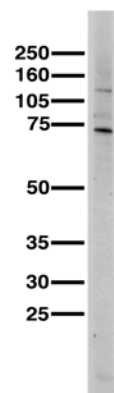
Antibody Class: IgG1

SPECIFICITY

This antibody recognizes human, mouse, and rat Cav β 2. It does not cross-react with Cav β 1, Cav β 3, or Cav β 4.

APPLICATIONS

Immunoblotting: use at 1-10ug/ml. A band of ~78kDa is detected.



Adult rat brain lysate

Immunohistochemistry and

Immunocytochemistry: use at 0.1-1ug/ml

Immunofluorescence: use at 1-10ug/ml

These are recommended concentrations.

User should determine optimal

concentrations for their application.

Positive control: Rat brain lysate

DILUTION INSTRUCTIONS

Dilute in PBS or medium which is identical to that used in the assay system.

STORAGE AND STABILITY

This antibody is stable for at least one (1) year at -20°C. Avoid repeated freezing and thawing.

For in vitro investigational use only. Not for use in therapeutic or diagnostic procedures.