

Anti-Kv3.4 K⁺ Channel Monoclonal Antibody

ORDERING INFORMATION

Catalog No.: 11521 (clone S72-16)
Size: 100ug in PBS, pH 7.4; 50%
glycerol, 0.09% sodium azide. Purified by
Protein G affinity chromatography.

BACKGROUND

Ion channels are integral membrane proteins that help establish and control the small voltage gradient across the plasma membrane of living cells by allowing the flow of ions down their electrochemical gradient. Kv3.4, a member of the Shaw subfamily, may play important roles in maintaining normal function of the corneal epithelium. Also, it is over-expressed in the early stages of Alzheimer's disease, and, therefore, represents a novel therapeutic target for that disease.

SPECIFICATION SUMMARY

Antigen: Synthetic peptide corresponding to aa 175-192
(GDEAGDDERELALQRLGP) of rat Kv3.4
(accession no. Q63734). This sequence
is 100% identical to mouse and 94%
identical to human.

Host Species: Mouse

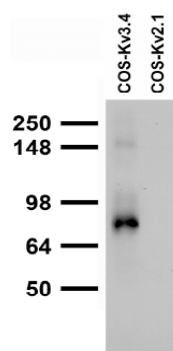
Antibody Class: IgG1

SPECIFICITY

This antibody recognizes human, mouse,
and rat Kv3.4.

APPLICATIONS

Immunoblotting: use at 1-10ug/ml. A band
of ~70kDa is detected; ~100kDa in brain
due to glycosylation.



Extracts of COS-1 cells transiently transfected with
Kv3.4 or Kv2.3 plasmids.

Immunohistochemistry and

Immunocytochemistry: use at 0.1-1ug/ml

Immunofluorescence: use at 1-10ug/ml
These are recommended concentrations.

User should determine optimal
concentrations for their application.

Positive control: Rat brain lysate

DILUTION INSTRUCTIONS

Dilute in PBS or medium which is identical
to that used in the assay system.

STORAGE AND STABILITY

This antibody is stable for at least one (1)
year at -20°C. Avoid repeated freezing
and thawing.

*For in vitro investigational use only. Not for
use in therapeutic or diagnostic procedures.*