

## Nav1.7 Na<sup>+</sup> Channel Monoclonal Antibody

### ORDERING INFORMATION

**Catalog No.:** 11517 (clone S68-6)  
**Size:** 100ug in PBS, pH 7.4; 50% glycerol, 0.09% sodium azide. Purified by Protein G affinity chromatography.

### BACKGROUND

Ion channels are integral membrane proteins that help establish and control the small voltage gradient across the plasma membrane of living cells by allowing the flow of ions down their electrochemical gradient. Nav1.7 is a voltage-gated sodium channel that plays an important role in the generation and conduction of action potentials making it important for electrical signaling by most excitable cells. Since Nav1.7 is not present in cardiac muscle or neurons in the central nervous system, blockers of Nav1.7 will not directly affect those cells.

### SPECIFICATION SUMMARY

**Antigen:** Fusion protein, aa 1751-1946 (cytoplasmic C-terminus) of human Nav1.7 (accession no. Q15858).

**Host Species:** Mouse

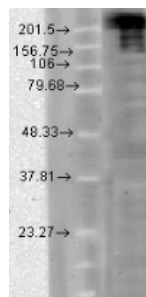
**Antibody Class:** IgG1

### SPECIFICITY

This antibody recognizes human, mouse, and rat Nav1.7. It does not cross-react with other Nav channels.

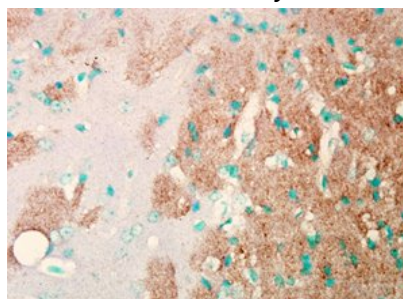
### APPLICATIONS

*Immunoblotting:* use at 1ug/ml



Detection of Nav1.7 in CHO cells with #11517 at 1ug/ml.

*Immunohistochemistry:* use at 1ug/ml



Detection of Nav1.7 in mouse brain with #11517 at 1ug/ml.

These are recommended concentrations. Enduser should determine optimal concentrations for their applications.

### DILUTION INSTRUCTIONS

Dilute in PBS or medium that is identical to that used in the assay system.

### STORAGE AND STABILITY

This antibody is stable for at least one (1) year at -20°C. Avoid repeated freezing and thawing.

*For in vitro investigational use only. Not for use in therapeutic or diagnostic procedures.*