

Anti-TACE / ADAM17 Antibody

ORDERING INFORMATION

Catalog No.: 1131

Size: 100ug IgG in PBS, pH 7.4, purified by immunoaffinity chromatography.

BACKGROUND

TNF α is synthesized as a 26kDa type II membrane-bound precursor that is cleaved by a convertase to generate secreted 17kDa mature TNF α . TNF α converting enzyme (TACE) has been identified, and human and mouse TACE cDNAs have been cloned. TACE is a membrane-bound metalloprotease-disintegrin in the family of mammalian ADAM (for a disintegrin and metalloprotease). TACE also processes other cell surface proteins, including TNF receptor, TGF α , L-selectin, and alpha-cleavage of amyloid protein precursor (APP). TACE mRNA is expressed in a variety of human and mouse tissues.

SPECIFICATION SUMMARY

Antigen: Peptide corresponding to aa 807-823 of human TACE (accession no. NP_003174). This sequence differs from mouse and rat TACE by one amino acid.

Host Species: Rabbit

Stabilizers: None

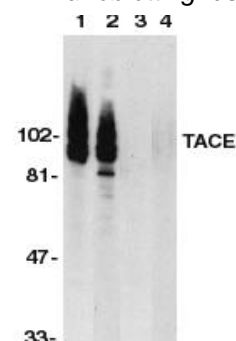
Preservatives: 0.02% sodium azide.

SPECIFICITY

This antibody recognizes human, mouse, and rat TACE, and 80-130kDa bands are detected in immunoblots. These bands may represent mature protein, precursor, and glycosylated TACE.

APPLICATIONS

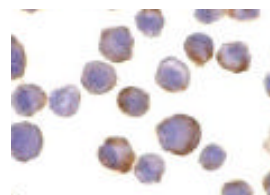
Immunoblotting: use at 1ug/ml.



Western blot analysis of TACE in HeLa (1,3) and Jurkat (2,4) cell lysate in the absence (1,2) or presence (3,4) of blocking peptide with TACE antibody at 1 μ g/ml.

Positive control: HeLa or Jurkat cell lysate.

Immunocytochemistry: use at 10ug/ml.



Immunocytochemical staining of TACE in HeLa cells with TACE antibody at 10 μ g/ml.

These are recommended concentrations. Enduser should determine optimal concentrations for their applications.

DILUTION INSTRUCTIONS

Dilute in PBS or medium which is identical to that used in the assay system.

STORAGE AND STABILITY

This antibody is stable for at least one (1) year at -20°C. Avoid multiple freeze-thaw cycles.

For in vitro investigational use only. Not for use in therapeutic or diagnostic procedures.