

p21-Activating Kinase 2 Polyclonal Antibody

ORDERING INFORMATION

Catalog No.: 11200

Size: 50ug peptide immunogen affinity purified antibody in PBS containing 0.02% sodium azide.

BACKGROUND

p21-Activating Kinase 2 (PAK2) functions in the regulation of the biochemistry and morphology of apoptotic cells. This protein is activated through proteolytic cleavage by caspase 3 in response to a variety of stresses, including DNA damage, hyper-osmolarity, addition of sphingosine, serum starvation, and contact inhibition. Activated PAK2 acts on several targets including histone H4, myelin basic protein, ribosomal protein s6, and the non-receptor protein tyrosine kinase c-Abl. At least four mRNA transcript variants have been reported.

SPECIFICATION SUMMARY

Antigen: Synthetic peptide conjugated to KLH.

Host Species: Rabbit

Preservatives: 0.02% sodium azide

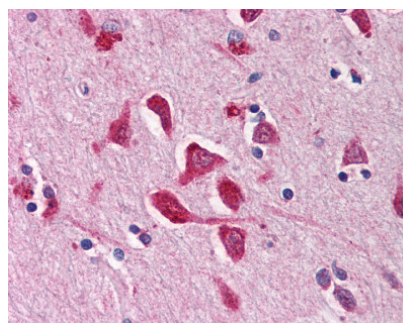
SPECIFICITY

This antibody recognizes an epitope near the carboxy terminus of human PKA2.

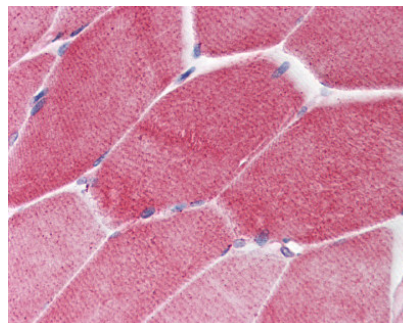
APPLICATIONS

Immunoblotting, Immunohistochemistry:

Use at 2.5ug/ml.



Brain, cortex: Formalin-fixed, paraffin-embedded



Skeletal muscle: Formalin-fixed, paraffin-embedded

DILUTION INSTRUCTIONS

Dilute in PBS or medium which is identical to that used in the assay system.

STORAGE AND STABILITY

This antibody is stable at 4°C (short-term) and -70°C (long-term).

For in vitro investigational use only. Not for use in therapeutic or diagnostic procedures.