

## Anti-RAIDD (IN) Antibody

### ORDERING INFORMATION

**Catalog No.:** 1115

**Size:** 100ug IgG in PBS, pH 7.4, purified by immunoaffinity chromatography.

### BACKGROUND

A novel cell death adapter was recently identified by two independent laboratories and designated RAIDD (RIP-associated ICH-1/CED-3-homologous protein with DD) and CRADD (caspase and RIP adapter with DD). RAIDD contains a DD and a CARD (caspase recruitment domain) which interact with RIP and caspase, respectively, to transduce death signals. RAIDD is constitutively expressed in many tissues and mediates apoptosis caused by Fas and TNFR1.

### SPECIFICATION SUMMARY

**Antigen:** Peptide corresponding to aa 99-117 of human RAIDD (accession no. AAB42217).

**Host Species:** Rabbit

**Stabilizers:** None

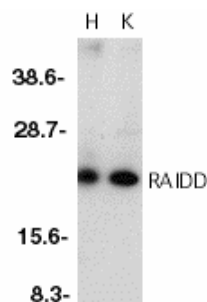
**Preservatives:** 0.02% sodium azide.

### SPECIFICITY

This antibody recognizes human RAIDD (22kDa).

### APPLICATIONS

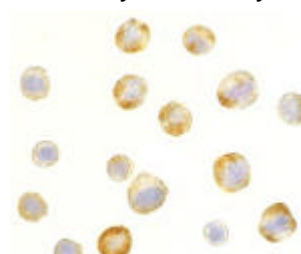
*Immunoblotting* : use at 1ug/ml.



Western blot analysis of RAIDD in whole cell lysates from HeLa (H) or K562 (K) cells with RAIDD antibody at 1µg/ml.

*Positive control:* HeLa or K562 cell lysate.

*Immunocytochemistry:* use at 5ug/ml.



Immunocytochemical staining of RAIDD in HeLa cells with RAIDD antibody at 5µg/ml.

These are recommended concentrations. Enduser should determine optimal concentrations for their applications.

### DILUTION INSTRUCTIONS

Dilute in PBS or medium which is identical to that used in the assay system.

### STORAGE AND STABILITY

This antibody is stable for at least one (1) year at -20°C. Avoid multiple freeze-thaw cycles.

*For in vitro investigational use only. Not for use in therapeutic or diagnostic procedures.*