

## tsp23 Monoclonal Antibody

### ORDERING INFORMATION

**Catalog No.:** 11137 (clone tsp232A)

**Size:** 100ug in PBS (1mg/ml), pH 7.4, 50% glycerol, 0.09% sodium azide.

Purified by Protein G affinity chromatography.

### BACKGROUND

tsp23 (transcript similar p23) is a homolog of human p23, a highly conserved ubiquitous protein and a cochaperone for the Hsp90 chaperone system. A small protein (18-25kDa) with a simple structure, p23 is a highly acidic phosphoprotein with an aspartic acid-rich C-terminal domain. Although numerous studies have found p23 associated with other proteins (i.e, Fes tyrosine kinase, heme regulated kinase HRI, Hsf1 transcription factor, aryl hydrocarbon receptor, telomerase, and Hepadnavirus reverse transcriptase), the functional significance of p23 remains to be clearly defined. It appears to be involved in ATP-mediated Hsp90 binding of client proteins. A recent study suggests that p23 might be a promising target in leukemic apoptosis. tsp23 is 44% homologous with p23.

### SPECIFICATION SUMMARY

**Antigen:** Recombinant tsp23

**Host Species:** Mouse

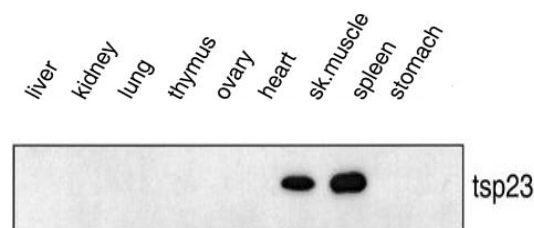
**Antibody Class:** IgG1

### SPECIFICITY

This antibody recognizes human and mouse tsp23. Other species have not been investigated. It does not cross-react with p23.

### APPLICATIONS

*Immunoblotting:* use at 1ug/ml. A band of ~19kDa is detected.



Immunoblot analysis of extracts prepared from indicated mouse tissues (Freeman et al. 2000 Genes & Dev 14: 433).

These are recommended concentrations; enduser should determine optimal concentrations for their applications.

*Positive control:* Lysate of HeLa cells transiently transfected with Tsp23.

### DILUTION INSTRUCTIONS

Dilute in PBS or medium which is identical to that used in the assay system.

### STORAGE AND STABILITY

This antibody is stable for at least one (1) year at -20°C. Avoid repeated freeze-thaw cycles.

*For in vitro investigational use only. Not intended for diagnostic or therapeutic applications.*